



***Drake & Scull***



**Drake & Scull International**

**PJSC PROFILE- 2025**

# Contents

03 | About Drake & Scull

04 | Company History & Milestones

06 | Mission, Vision and Values

07 | DSI Business Streams

10 | DSI PJSC Global Footprints

17 | Drake & Scull Vertical Integration

18 | Corporate Governance and Risk Management

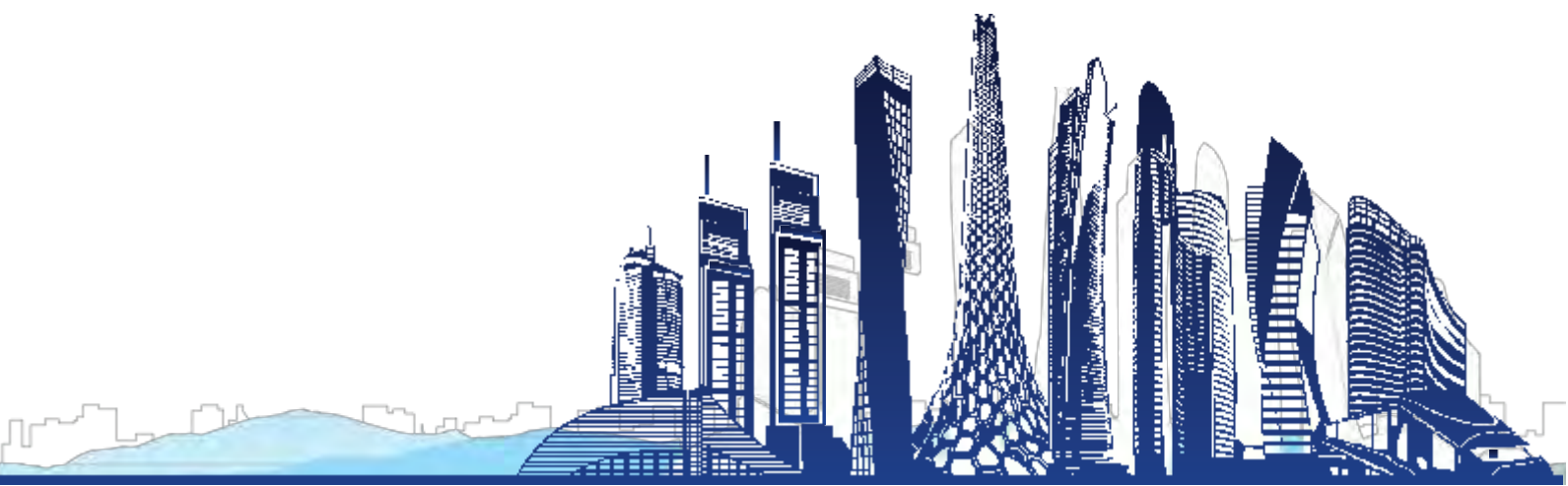
22 | Projects

23 | Drake & Scull Engineering

61 | Drake & Scull Oil & Gas (DSO&G)

63 | Passavant Energy & Environment

70 | Drake & Scull - ISO Certification



# About Drake & Scull

Drake & Scull International PJSC (DSI) is a regional market leader in projects management, engineering, procurement, construction, commissioning, operation and maintenance.

DSI established its first regional office in Abu Dhabi in 1966, and has since expanded its operations to include offices in Dubai, Saudi Arabia, Qatar, Kuwait, Oman, Egypt, Jordan, Algeria, and India. It also manages projects in Europe and North Africa.

DSI's main historical business streams include Drake & Scull Construction (DSC), the general civil contracting unit; Drake & Scull Engineering--Mechanical, Electrical & Plumbing (MEP); Drake & Scull Rail and Infrastructure, for rail networks, depots and district cooling infrastructure; Drake & Scull Oil & Gas for onshore upstream and downstream process plant and pipelines oil and gas.

Drake & Scull Development, for equity investment in selected projects; and Passavant Energy & Environment, for water, waste water treatment and renewables projects.

In 2008, DSI offered 55% of its shares to the public, and the IPO was oversubscribed 101 times. Ernst & Young ranked the IPO among the top 20 globally in 2008.

DSI has utilized the additional funds generated to integrate, establish, and acquire businesses that complement its corporate strategy of expansion into new markets via organic and inorganic growth. The company's fully-integrated management systems – certified to ISO 9001:2015, ISO 14001:2015, ISO 45001 :2018 standards are compliant with leading building, health, and safety regulations, as well as sound environmental and energy management practices. For over 55 years, DSI has assumed industry leadership through its successful completion of even the most complex projects in a timely manner, within budget, and matching the prescribed quality parameters. The many prestigious projects it has been involved with have helped shape the region's dynamic skyline.

DSI's projects portfolio includes UAE landmarks such as the Baynunah Tower in Abu Dhabi, the Dubai Chamber of Commerce and Industry, Jumeirah Beach Hotel, District Cooling Projects -Dubai Festival City, JBR, Motor City, The Royal Amwaj Resorts & Spa, Movenpick Hotel & Oceana Residences, American Hospital Dubai, Maliha Military Hospital Sharjah, Zayed University Dubai, the Shangri-La Abu Dhabi Hotel, Presidential Palace Abu Dhabi, Louver Museum Abu Dhabi, among others.

Across the GCC, DSI has delivered prominent developments such as the Kuwait State Audit Bureau headquarters, The Four Seasons Hotel in Qatar, Sultan Qaboos Great Mosque in Oman, and the King Abdullah University of Science & Technology (KAUST) in Saudi Arabia, among others.

Globally, DSI teams have worked on several high-profile projects, including the Hong Kong Air Cargo Terminals Limited (HACTL) Super-terminal and Castle Peak Power Station in Hong Kong, the Dar Es Salaam International Airport in Tanzania, The Promenade complex in Singapore, Ducat Place in Moscow, Shen Zen International Trade Centre in China, a Nitrogen Generation Plant in Germany, the Dupont Nomex Expansion Project in Spain, The Holiday Inn Hotel in Grenada, Queen Victoria Hospital in Barbados. DSI also delivered chemical plant for EHC in Egypt and Oil and Gas upstream facilities and pipelines for ENI Iraq.

Through experienced on-site project teams and expert management, co-ordination, planning, purchasing, and quality control, DSI ensures that it completes projects within the client's time, cost, and quality specifications.

DSI is led by an experienced management team, and offers one stop end to end contracting solutions. DSI currently is in the process of consolidating its business & operations into focused business units and optimizing its presence in countries with high potential projects.

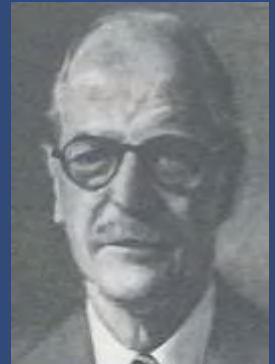


# History of DSI

## Overview



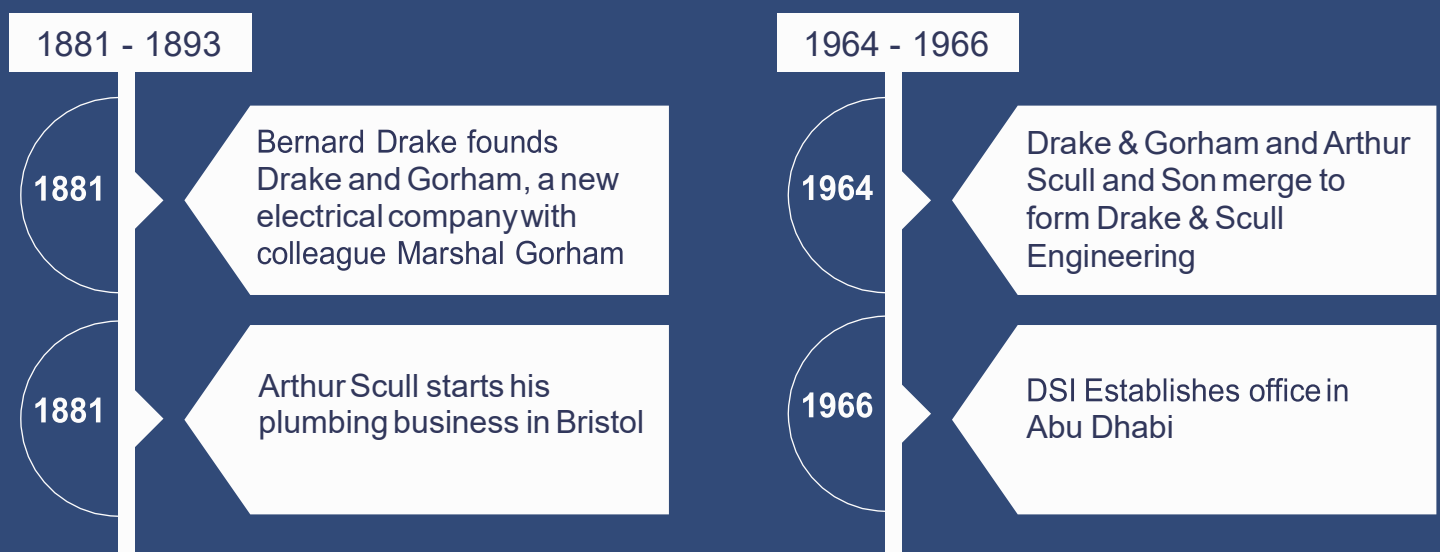
Arthur Scull



Bernard Drake

- Established in the UK in 1881 as two dedicated companies focusing on electrical and plumbing works respectively
- Both companies merged in 1964 to create Drake & Scull International (DSI)
- Drake Scull International (DSI) ventured into the middle east in 1966 with an operational base in Abu Dhabi
- DSI launched a highly successful IPO in 2008 and listed on the Dubai Financial Market in 2009
- DSI diversified into General Contracting, Rail & Infrastructure, Water and Wastewater Treatment and Oil & Gas
- DSI expanded global footprint to span MEA, Europe and South Asia

## Evolution of Drake & Scull





# Evolution of Drake & Scull

2006 - 2011

2006  
-  
2007

DSI establishes Infrastructure, Water and Power operations

DSI acquires Gulf Technical Construction Company (GTCC)

2008

DSI offers 55% of its shares to the public through its IPO, which was 101 times over-subscribed

2009

DSI acquires Drake & Scull Kuwait and Passavant Roediger and opens offices in Jordan and Thailand

2010

DSI establishes Drake & Scull Water and Power and Drake & Scull Construction

DSI acquires Drake & Scull International Qatar and opens offices in Egypt and Oman

2011

DSI acquires Saudi based Drake & Scull International Saudi Arabia and Civil Construction firm ICC

DSWP establish office in India

Drake & Scull forms dedicated Oil & Gas division

DSWP and DSC establish offices in Qatar

2012 - 2017

2012

DSI launches Drake & Scull International Oil & Gas in Abu Dhabi

Establishes offices in India, Iraq and Algeria

Launches Drake & Scull Rail in MENA and Asia

2013  
-  
2016

Drake & Scull Engineering is formed by merging the MEP and WP businesses

Passavant Roediger evolves into Passavant Energy and Environment

2017  
-  
2022

2017: Recapitalization Program Completed

Tabarak Investment acquires 52 % of DSI

Financial restructuring to revive its future operation

2023

DSI was relaunched on the principles of business success. Consolidating its operations and focusing on core expertise to bring out efficiency and growth



# Mission, Vision and Corporate Values

## OUR MISSION

We will safely deliver world-class projects, providing Integrated Design and Engineering, Procurement, Construction, and Commissioning through our value system – People, Innovation, Passion, and Integrity – while promoting environmental protection and sustainable community development.

## OUR VISION

By capitalizing on our heritage and brand values, we will invest in growing organically and inorganically to become a global market leader, providing engineering excellence to clients, while achieving optimum shareholder value through commitment to best practices in corporate governance and transparency.

## DSI VALUES

We are proud to be a company driven by vision and fueled by our passion. Core to our success is our people, and the four values at the heart of our business:

### PEOPLE

We recognize that our people are the heart of our organization. We strive to provide an environment that attracts, motivates, and develops individuals. We encourage cooperative efforts at every level and across all activities within the company. We create and implement a succession / career-progression planning programme that articulates corporate expectations clearly, while charting a well-defined course for employee development.

### INNOVATION

We encourage innovation in order to cultivate originality and pursue new ideas and technologies, while introducing the right processes and models to put this to work safely, quickly, and efficiently, in order to improve the standards and diversity of our services continuously, all for the common benefit of our stakeholders.

### PASSION

We believe that great success requires hearty efforts and dedication. We embrace and foster passion in every aspect of our business – from innovation and learning, to management and clients satisfaction, to employee and skills development.

### INTEGRITY

We are committed to promoting and enforcing the highest standards of ethical behaviour, and require all of our employees, suppliers, and business partners to act in accordance with our ethical principles. All forms of bribery, corruption, and similar unethical behaviour and activities are not tolerated.



- \* Drake & Scull Engineering business unit:** Focuses on Commercial, Residential, Industrial Buildings & Infrastructure Projects & Services, consists of Drake and Scull Engineering Dubai, Drake and Scull Abu Dhabi and Drake and Scull Engineering branch of Abu Dhabi
- \* Drake & Scull Oil & Gas:** Focuses on Oil, Gas & Petrochemical Projects & Services
- \* Passavant Energy & Environment:** Focuses on Water, Waste water, & Renewable Energy Projects & Services
- \* Drake & Scull Development:** Focuses on Investment projects in all Industries



# DSI Business Streams

DSI offers its client one stop end to end contracting solutions through integrated project management, engineering, procurement, construction, construction management, commissioning, start up, operation and maintenance. The DSI main business streams are:



## Drake & Scull Engineering

Drake & Scull Engineering (DSE) business stream was formed through the consolidation of the expertise of DSI PJSC's Civil & MEP's business units. Headquartered in the UAE, DSE is well-placed to deliver turnkey Commercial, Residential & Industrial buildings, infrastructure and District Cooling Projects including Civil, Mechanical, Electrical, Plumbing and O & M across the MEA and Asia regions, through diversified and integrated solutions.

DSE's global footprint KSA, Qatar, Kuwait, Oman, Egypt, India, Algeria, Jordan, and the UK. DSE's MEP capabilities provide a complete range of Civil Mechanical, Electrical and Plumbing services to the construction industry, delivered through highly-experienced project management teams that exceed expectations, and meet clients' time, cost and quality requirements.

Recognized widely as the industry leader in the fields of innovation and value engineering, DSE has established an enviable reputation through sustained excellence, built upon a solid track record of delivering complex turnkey projects on time and on budget.

The outstanding work delivered on its internationally-renowned projects has resulted in the industry recognizing DSE's achievements through various coveted awards. DSE offers an integrated approach, providing diverse services packaged together, and delivered from, one integrated source – with all the associated cost, time, and installation benefits derived from seamless and highly professional project teamwork and management.



## Drake & Scull Oil and Gas

Drake & Scull Oil and Gas (DSI Oil & Gas) was created in 2010 as a department of Drake & Scull International to offer a wide range of first-class contracting services to the onshore oil and gas industry, upstream, downstream, process plants and pipe lines projects. It is a natural progression of the experience acquired by DSI PJSC's Group of Companies, garnered from their involvement in the region's oil and gas and petrochemical industries.

Based in Abu Dhabi, with easy access to, and strong mobilization capabilities, across the MEA region, Drake & Scull Oil and Gas became an independent business stream in 2012. It offers its clients turnkey Engineering, Procurement, Construction (EPC) management and contracting services for the oil and gas and petrochemical industry through its dedicated oil and gas set-up.

DSI Oil & Gas is capable of developing turnkey services from process design to facility/plant start-up. It is ISO 9001, ISO 14001 and ISO 45001 certified. DSI Oil & Gas offers complete end-to-end EPC project services, and is equipped to assume complete responsibility from project basic design to start-up activities for oil, gas and water gathering, processing, transportation, and storage systems and plants. The company also undertakes construction of infrastructure relating to the oil and gas industry, covering a wide range of projects, such as:

- Water, oil and gas pipelines and related pump and compression station systems
- Oil refineries and petrochemical plants
- Heavy and light industrial plants
- Maintenance of mechanical installations

# PASSAVANT

## Energy & Environment

Passavant Energy & Environment GmbH is a global specialist engineering, procurement and construction (EPC) provider of turnkey wastewater treatment plants, drinking water structures, and industrial process water plants, as well as sludge and solid waste treatment plants, including bio-gas treatment and energy recovery and operation and maintenance. The company's core expertise lies in a highly-regarded sludge digestion technology adopted by hundreds of wastewater treatment plants all over the world for close to continuous 200 years.

Passavant Energy & Environment has advanced research and development centers for wastewater, water and sludge treatment, providing solutions for:

- Raw-water treatment
- Desalination/demineralisation
- Ground water and surface water treatment
- Treatment of residues

- Municipal wastewater treatment
- Industrial wastewater treatment
- Sludge treatment
- Mechanical and biological waste treatment

Passavant Energy & Environment currently operates in Romania, Germany, Algeria, UAE, Turkey, India, and China, with projects around the world, including Algeria, Jordan, Egypt, the UAE, and Saudi Arabia.

Passavant delivers advanced technologies and solutions, including:

- Membrane Bio Reactor (MBR)
- Moving Bed Biofilm Reactor (MBBR)
- Sequencing Batch Reactors (SBR)
- Activated Sludge
- Turbo LME



## Dake & Scull Development

Drake & Scull Development (DSD) is DSI PJSC's business stream focusing on selected Private Investment Partnerships for infrastructure projects in MEA. Utilizing DSI PJSC's global network of regional offices. DSD philosophy is to participate as an investor in selected joint venture projects, and to share the revenue stream generated from the operation and retail components of the project post-completion. In addition to creating an opportunity for the other group business streams in building these Projects.

Launched in 2011, DSD aims to leverage the history, expertise, and geographic spread of DSI PJSC, and maximizes the synergies between the different business areas.

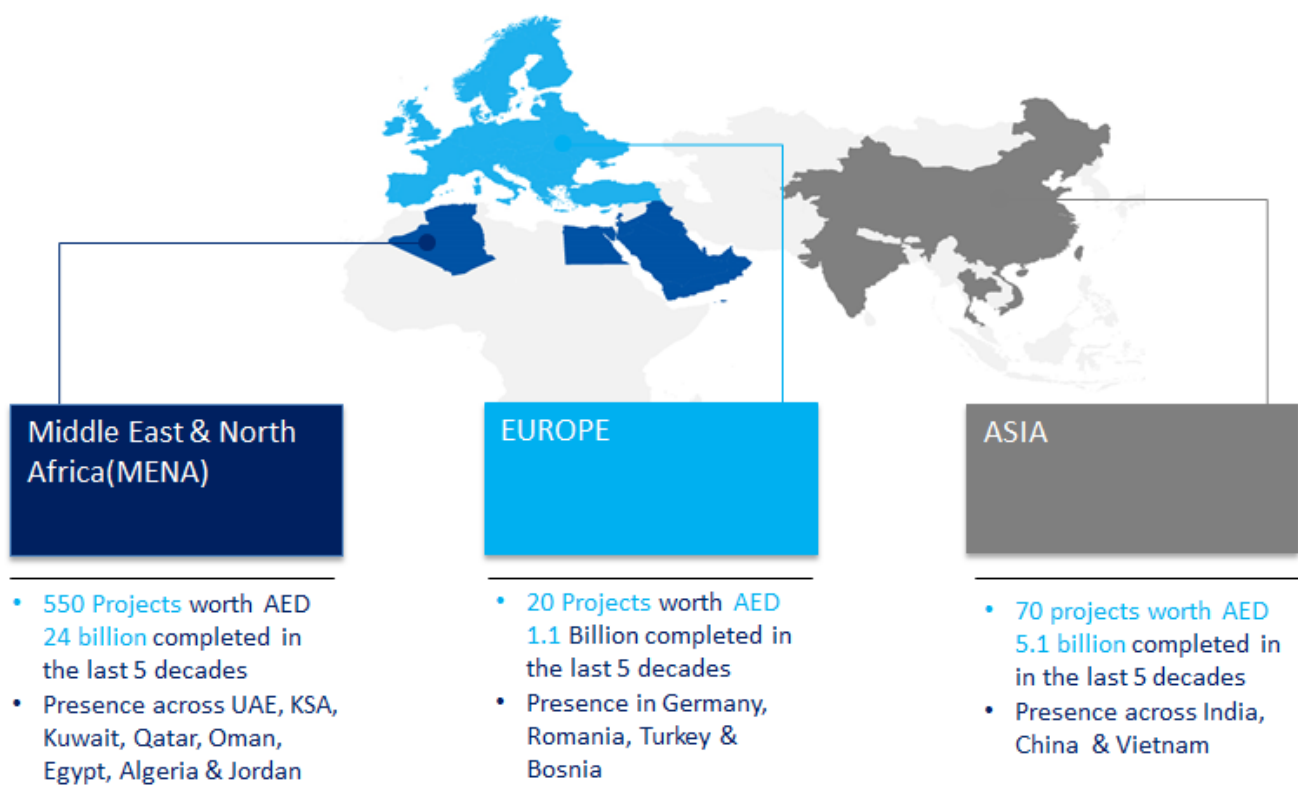
DSD interest is in project development and investment in public and private sector power and utility initiatives.

DSD is able to offer Clients export credit financing for their selected Project, using Passavant that is well placed in Germany for this task.

With several multi-million dollar infrastructure projects initiated in the MEA region to cope with the rising population under its belt, DSD is well-positioned to be the leading infrastructure partner of choice in addressing the developing needs of a rapidly changing region.



# DSI Global Footprints & Business sectors







# Education

## Sector Overview

Investment in educational institutions is at the heart of governments' social development programmes in the region. MEA countries recognize the implications of ensuring high-quality education, and its impact on ensuring sustainable future economic growth. Substantial funds have been dedicated to decrease illiteracy rates through the development of a wide range of educational institutions across the region. We have extensive experience in the educational development industry, and specialize in integrated Civil & MEP services for education facilities.

## Engineering Capabilities

We adopt specific design policies and applications of proven technologies and systems to provide cost-effective alternative design concepts. Our engineering standards entail a comprehensive overview of the base-line concepts and philosophies for Civil & MEP design developments. To ensure maximum quality and value during the construction stage, our project managers incorporate efficient cost scheduling and documentation tools, and implement a milestone-based delivery approach, focusing on reliability, serviceability, and cost-effectiveness.

## We Offer

- Complete building turn key solutions
- Civil structure and finishing works
- HVAC layout design and detailing
- Installation of large air-handling units
- Extract-air ventilation system, Ductwork
- Condensate drainage and chemical dosing systems
- Domestic water storage tanks, filtering and cooling systems
- Firefighting and fire alarm systems
- LPG and BMS systems
- Power distribution systems
- Façade lighting and lighting control systems
- Audio video and CCTV and UPS systems
- Security access control systems

## Experience

- King Abdullah Petroleum Studies and Research Centre (KAPSARC), KSA
- Zayed University, Dubai, UAE
- American School of Dubai, Dubai, UAE
- King Abdullah University of Science & Technology (KAUST), Jeddah, KSA
- College of Basic Education, Shuwaikh, Kuwait
- Special Training Centre, Shuwaikh, Kuwait
- Nursing Institute, Shuwaikh, Kuwait
- College of Health Sciences for Girls, Shuwaikh, Kuwait



# Healthcare

## Sector Overview

Increasing market pressure and fierce competition among healthcare providers have made the development of healthcare facilities a complex undertaking. In addition to this, the underlying rules and requirements of regulatory agencies with jurisdiction over healthcare institutions and facilities, combined with advancements in medical equipment, clinical procedures, and building technology, along with higher patient expectations, have made development much more arduous. We understand the vast and unique development requirements involved, and offer a holistic, integrated engineering approach that meets current and future needs.

## Engineering Capabilities

We deliver high-performance Civil & MEP Integrated systems with emergency back-up structures necessary for the types of healthcare procedures performed. Our integrated solutions allow clients to support quality, sustainability, and safety, and impacts their financial success significantly. Our engineering reviews help clients develop the scope and budget of projects, based on their healthcare programme and services.

Our latest engineering software employs virtual design coordination of building systems for client review, allowing us to deliver on time, and to reduce the margins of unforeseen expenditures.

## We Offer

- Complete building turn key solutions.
- Complete civil structure and finishing works.
- HVAC layout design and detailing ductwork and VAV boxes with hot water reheat
- Installation of large air-handling units
- Installation of Phoenix exhaust systems for laboratory areas
- Power and lighting for laboratory/procedure areas
- Installation of electrical gear closets
- Rough-in for all security, CCTV, tele-data, and nurse call systems
- Ventilation and air-handling systems and special exhaust fan systems

## Experience

- Paediatric Hospital and Emergency Centre at King Hussein Medical City, Amman, Jordan
- American Hospital Expansion, Dubai, UAE
- Rashid Hospital Emergency and Trauma Centre, Dubai, UAE
- Montego Bay Hospital, Cornwall, Jamaica
- Sokoto Teaching Hospital, Sokoto, Nigeria
- Mina Hospital, Makkah, KSA
- Jizan Hospital, Jizan, KSA
- King Khaled Hospital Extension, KSA
- Al Dara Hospital, KSA
- King Fahad Medical City, KSA
- Danat Al Emarat Hospital, UAE
- Maliha Hospital, UAE



# Hospitality

## Sector Overview

The Middle East is one of the most dynamic tourism regions in the world, and is a magnet for travelers. The abundance of its natural, historic, and cultural assets has spurred a wave of development in the hospitality industry during the past decades. The World Tourism Organization predicts that, by 2020, Middle Eastern destinations will receive 68.5 million arrivals, representing a growth rate of 7.1% over the period 1995 to 2019. This trend that is anticipated to continue its growth in the coming 20 years represents lucrative opportunities for hotel operators, and will stimulate rapid developments in the hospitality industry. We have long anticipated this growth, and have been a key player in the development of the most iconic hotels and resorts in the region.

## Engineering Capabilities

During the early stage of project execution, we systematically study design and layout options to provide value and flexibility, and to guarantee the quality of integrated Civil & MEP services. Our engineers conduct periodic reviews of materials and methods to maintain quality and balance costs. Our project managers incorporate a full-time schedule coordinator to ensure timely delivery and a well-managed workforce. Verification of project budget and scope is at the heart of our holistic approach towards minimizing energy cost and maximizing project value.

## We Offer

- Complete building turn key solutions.
- Complete civil structure and finishing works.
- Distribution systems for electrical power
- Lighting systems
- Low-voltage systems for heating, ventilation, AC, refrigeration, district cooling
- Plumbing, process and high-purity piping systems
- HVAC layout design and detailing
- Firefighting and fire-alarm systems
- Power distribution systems
- Audio video, CCTV, and UPS
- Security access-control systems

## Experience

- Jumeirah Beach Hotel, Dubai, UAE
- Rotana Hotel and Centro Hotel Yas Island, Abu Dhabi, UAE
- Shangri La Qaryat Al Beri, Abu Dhabi, UAE
- The Royal Amwaj Resorts & Spa, Dubai, UAE
- Mövenpick Hotel & Spa and Oceana Residences, Dubai, UAE
- Rosewood, Abu Dhabi, UAE
- Fairmont Palm Hotel & Resort, Dubai, UAE
- Four Seasons, Doha, Qatar
- Jewel of the Creek, Dubai, UAE





# District Cooling

## Sector Overview

The district cooling industry is rapidly in step with the region's construction growth, which has seen a quick shift from traditional air-conditioning facilities to advanced district cooling systems that reduce energy and maintenance costs, and mitigate environmental damage. Master-planners are increasingly considering the long-term benefits of such systems, and governments are incorporating the necessary infrastructure developments for their efficient implementation and usage.

We offer customised, optimum solutions in this field, and are actively seeking technologies to lower end-user utility costs, and further minimise the environmental impact of the deployment of district cooling facilities.

## Engineering Capabilities

Our dedicated and skilled engineers utilise proven and reliable environmentally-friendly cooling technology. We control conditions through advanced monitoring systems at district cooling sites. Our design structure incorporates early warning systems and operational systems designed to respond proactively to unexpected changes and technical reviews. Our services secure significant long-term reductions in operating and maintenance costs, avoid major capital expenditures for developers, and ensure reduced peak electrical demand, while reducing overall electrical loads.

## We Offer

- Complete end to end turn key solutions.
- Installation of civil structure, mechanical, electrical, and support equipment and systems for central cooling plants
- Installation of interconnected site-wide reticulation
- Set-up of energy transfer stations (ETS)
- Cooling tower make-up and blow down pipelines
- Façade treatment around ground-level cooling towers
- Polishing plants and using water for cooling tower make-up and irrigation requirements

## Experience

- Jumeirah Beach Residence District Cooling System, Dubai, UAE
- Motor City District Cooling Plant, Dubai, UAE
- Festival City District Cooling Plant, Dubai, UAE
- Meydan Race Course Central Plant Dubai, UAE
- Khalifa City District Cooling Plant, Abu Dhabi, UAE
- Dohaland District Cooling Plant, Doha, Qatar
- Information Technology & Communication Centre District Cooling Plant, Riyadh, KSA
- Hadeed District Cooling, Jubail, KSA
- Wadi Lusail District Cooling Plant, Doha, Qatar



# Aviation

## Sector Overview

The exponential growth of the region's airport industry represents great opportunities for the Civil & MEP integrated services market. The sector's rising awareness in the fields of energy, environmental sustainability, and public health, safety and security protocols represents major challenges for Civil & MEP contractors. We offer comprehensive contracting service solutions that address these challenges throughout the various stages of project delivery.

## Engineering Capabilities

The involvement of our design engineers in the early stages of a project ensures proper service integration and performance sustainability. Our state-of-the-art engineering solutions are designed to ensure sensitivity to the environment and natural resources throughout project implementation. We pro actively manage our processes to cope with continuous airport design reviews and modified security levels and protocols.

Value engineering is incorporated as a basic service in every completed design to ensure a quality design philosophy. Our civil, mechanical, electrical, and plumbing engineering services adhere to rigid standards and specifications to provide consistently reliable systems, and to help passengers arrive safely at their destinations.

## We Offer

- Complete buildings turn key solutions
- HVAC layout design and detailing
- Duct workshop/coordination drawings
- MEP layout design and detailing
- Piping and plumbing shop/coordination drawings
- Submittals review
- Design listed systems review
- Material inspection
- Observation review
- Destructive review
- Final report and certification

## Experience

- New Muscat International Airport, Musca, Oman
- International Airport Terminal Phase II, Abu Dhabi, UAE
- Extension of Military Airbase, Dubai, UAE
- Kai Tak Airport, Hong Kong
- Phase I Air Cargo Terminals, Hong Kong
- New Doha International Airport CP15, Doha, Qatar
- Dar Es Salaam International Airport, Dar Es Salaam, Tanzania





# Railway

## Sector Overview

The transport industry, and predominantly rail transportation, has progressively resurged in the Middle East. The region's nations are focused on making high-speed rail (HSR) an integral part of their transportation infrastructure. HSR development is considered a top priority for governments experiencing rapid population growth, which imposes heavy loads and strains on alternative transportation infrastructure. Our integrated engineering solutions are designed to respond to the sophisticated technical requirements of complex underground metro networks, high-speed rail, and commuter rail in urban environments, iconic rail termini and rolling-stock maintenance depots.

## Engineering Capabilities

We have developed integrated management systems to ensure health and safety, quality, and environmental compliance. Our engineering process management is fully integrated with company requirements for commercial and financial management, using a methodology to assure structured and disciplined design delivery. It is based on the BSRIA Responsibility Matrix, developed specifically for engineering managers responsible for design development, meeting the project cost plan and agreed programme and technical requirements. We specialise in incorporating HVAC, smoke ventilation, general air extraction, fire protection and alarm systems, standalone emergency exits systems, and well-engineered electrical distribution systems with complete back-up.

## We Offer

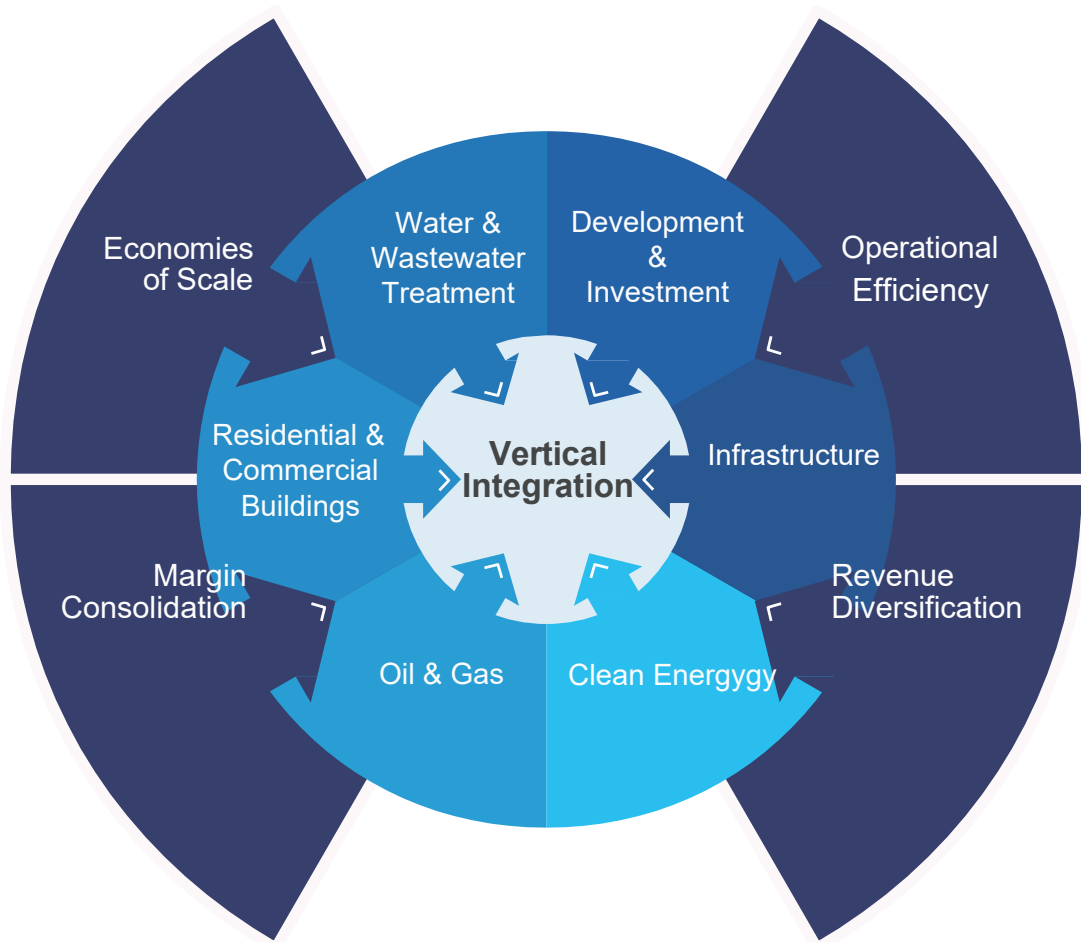
- Complete end to end buildings solutions.
- Tunnel ventilation
- Smoke control
- Fire detection and protection
- Lighting
- Telecommunications
- Drainage
- H&C water
- Air-conditioning
- Power
- Public health services

## Experience

- Channel Tunnel Rail Link Line Infrastructure, London, UK
- St Pancras Station Redevelopment, London, UK
- Jubilee Line Extension Project, London, UK
- Dubai Airport Passenger Movement System, Dubai, UAE
- Doha Metro Depot and Stabilising Yards, Doha, Qatar



# Drake & Scull Vertical Integration



Drake & Scull's business units share a common characteristic: an inherent ability to build and maintain lasting client relationships through integrated process synergies. The business streams complement each other by providing exceptional value to clients through seamless engineering and procurement capabilities.

A tremendous benefit to clients is our unique ability to offer a single point of contact for addressing Buildings (commercial & industrial), infrastructure, energy, oil and gas, water and wastewater treatment needs. The homogeneity of work cultures and styles ensures that multiple teams are coordinated on-site, and deliver projects on time. Project Management is planned carefully and carried out efficiently by appointing the best people in key positions. Drake & Scull is among a select few contractors in the region that possess this capability.

Drake & Scull is a publicly-listed company run by a competent management team that works with complete transparency and accountability. The company adheres to top-notch management practices on par with the leading standards in the region.

A rich history of complex projects across diverse sectors around the world delivered by the region's leading engineering talents makes Drake & Scull the leading end-to-end integrated engineering solutions provider in the region.



# Corporate Governance & Risk Management

To manage the many risks inherent in the contracting and construction industries, DSI has developed a series of robust and interlocking management systems. These include a clear and transparent system of corporate governance, and a series of structures aimed at measuring and managing risk. The key risks facing the company are diverse in nature, and have to be measured at all levels, from project risks through to area and regional risks manifested at both the business stream and corporate levels.

## Corporate Governance

Our board undertakes primary risk management, and has a number of independent directors, as well as three specialist committees: Executive, Remuneration, and Audit.

The Executive Committee develops our corporate goals, strategies, plans, and policies for recommendation to the main board for its approval and, when approved, ensures these are implemented properly and corporate results achieved. Committee members include the Chief Executive Officer, and other key executives as deemed appropriate from time to time.

The Remuneration Committee considers matters relating to executive compensation, including the policy for all incentive and benefit plans; strategic HR issues such as employee retention, motivation, and commitment; and senior executive succession planning. It comprises independent non-executive board members and, when appropriate, draws upon the experience of other company executives, mainly the Head of HR.

The Audit Committee is responsible for the independent oversight of our overall corporate compliance, governance, and regulatory risk and audit requirements. It recommends for BOD consideration and share holders assembly approval, our independent external auditors, and monitors and oversees their work. It also assesses internal audits and compliance, reviews financial statements and financial reporting systems, and monitors compliance with the company's Code of Business Conduct. This committee comprises independent non-executive board members, and the Internal Audit and Compliance Head.

## Management Systems

Within management we have the Risk Management Committee, comprising the Chief Executive Officer, Chief Financial Officer, Internal Audit Compliance Head, and at least one Business Stream Director from each Business Stream. This committee identifies exposures and manages the Risk Control Programme and Risk Financing Strategy. It also oversees credit, market liquidity, operational, legal, and other risks, all within a framework of prudent and effective business controls and processes.

The committee recommends the risk philosophy and risk tolerance for board approval, defines the company's risk appetite, and reviews risk-management processes. All business units and projects must apply risk-management techniques, with compliance monitored by the Risk Management Committee. The metrics are based on a standard format demonstrating risk exposure before application of control measures, and the measurable benefits of control and mitigation. These measures are based on a 'five by five' matrix, with the vertical axis measuring the impact and severity of the risk (graded and rated 1 to 5, while the horizontal axis measures likelihood and probability, also rated 1 to 5). The resultant aggregate risk value is tracked and shown on a 'heat map' as a green-, yellow- or red-rated risk. All risks are reviewed again after mitigation.

## Continuous Auditing

These risk policies and standards are applied through a well-documented internal audit system that ensures all departments and project sites are monitored, and that their operations conform to company policies and procedures, international standards, local laws and regulations, and all contractual agreements.

From 2011, we implemented a comprehensive programme of internal, as well as independent external, audits to ensure full compliance with our various obligations as a publicly-listed company, and to ensure that all of our operations comply with all of our directives, policies, and procedures. This was achieved through the establishment of a fully independent Internal Audit and compliance department and supported by our relevant staff. The Head of Internal Audit & compliance reports directly to the Audit Committee of the Board of Directors.

In 2017, in recognition of the importance of the need for robust compliance, governance, regulation, risk and audit measures, the function was redeveloped to be on par with other core functions such as finance, with the functional leadership elevated to Internal Audit and Compliance Head. This placed it at the core of all business operations while, at the same time, through direct reporting to the board of directors, maintaining its independence from day-to-day delivery activities.

## Continuously Assessing Risk and Our Risk Appetite

Risk is inherent in all businesses. Our ability to manage risk is, in many ways, a key determinant of our profitability. There are various ways to measure the risk appetite of a company. We use a software application called 'Risk Explorer' that surveys senior executive attitudes, consolidates the results, and provides us with a continuously updated snapshot of our risk-management capabilities. This informed measurement of our capabilities allows management to assess capabilities and stress areas quickly.

Before entering any market, acquiring new businesses or undertaking any new ventures, rigorous due diligence is undertaken. Risks are graded under a 'traffic light' system, and compiled in a risk register that allows for the active monitoring and management of all risks.

## Managing Receivables Risk

DSI operates a monthly valuation and billing cycle. Our businesses are all run on a project-based business model. Each project is governed by the standard terms and conditions of the contract. These terms prescribe the payment procedure, which is always based on a monthly valuation, and the certification and payment cycle. The monthly certification and billing processes are monitored closely by the Financial Controller, Finance Manager or Chief Accountant of each business, who ensure payments are made on time. Receivables risk is managed in accordance with the Accounts Receivable Policy, and through direct relationships with the consultants, the engineer or project manager working on behalf of the client, and the client's management team. If necessary, non-payment issues may be referred to the board.



# Awards

## 2017

DSI's IT Department won 'Collaboration Project of the Year' under Project Enterprise Transformation in the End User category at the Network World Middle East Awards by CNME.

DSI wins the "Best CSR Initiative of the Year" for the "Because We Care" campaign at the Construction Business Awards.

## 2016

DSI wins MEED Quality Project of the Year and Sustainable Project of the Year awards in the GCC category for its work on the King Abdullah Petroleum Studies and Research Centre at the 2016 MEED Quality Awards for Projects.

DSI's work on the KAPSARC project is declared National Winner (KSA) under the Sustainable Project of the Year category at the 2016 MEED Quality Awards.

## 2015

DSI won the Regional Market Penetration Award at Construction Innovation Awards Qatar 2015.

DSE KSA won the Enterprise Agility Award 2015 under the category of Construction Industry for its outstanding contribution to the regional construction industry.

## 2014

DSE won the 2014 Sheikh Khalifa Excellence Award under the Silver category.

DSI PJSC won the Enterprise Agility Achiever Award at the 2014 Enterprise Agility Awards in the UAE.

DSE Qatar won the Qatar Enterprise Agility Award for 2014 under the category of Construction Companies for demonstrating innovation and outstanding business conduct.

DSI's work on the prestigious KAPSARC project was declared the KSA Building Project of the Year at the 2014 MEED Quality Awards.

For the third consecutive year, Drake & Scull was declared the Top Construction Company in the Middle East by Forbes Middle East.

## 2013

DSI won the Health and Safety Initiative of the Year for the third consecutive year at MEP Middle East Awards 2013.

DSI was recognised for its outstanding work under the category Social Project of the Year for KSA for its work on the Information Technology Communications Complex in Riyadh at the MEED Quality Awards 2013.

## 2012

DSI PJSC subsidiary Passavant Energy and Environment was bestowed with the Best Wastewater Treatment Plant Project in the Middle East award for its work in Shallala (Jordan) and Nablus (Palestine) at the 2012 H2O Middle East awards.

DSI PJSC won the Specialist Contractor of the Year award and the Health and Safety Initiative Award at the Construction Week MEP Awards 2012.

Drake & Scull wins the Frost and Sullivan MENA Environmental Excellence Award for Vertical Market Penetration Leadership Award (EPC) in the Middle East Waste Management Market.

DSI PJSC is listed among the Top 50 Companies in the UAE by Forbes Middle East.

## 2011

DSI PJSC is presented with the Health and Safety Initiative of the Year award at the 5th MEP Awards 2011.

DSC, the civil subsidiary of DSI PJSC, wins the coveted GCC Contractor of the Year award at the Construction Week Awards 2011.

## 2009

DSI wins the Sustainable Design of the Year award for its work on King Abdullah University of Science and Technology (KAUST) at the 3rd Middle East MEP Awards in Dubai, UAE.

## 2008

For the second year in a row, DSI wins the MEP Contractor of the Year award at the 2nd Middle East MEP Awards in Dubai, UAE.

## 2007

DSI wins MEP Contractor of the Year and Medium MEP Project of the Year at the inaugural Middle East MEP Awards in Dubai, UAE.



# Projects Drake & Scull Engineering - (DSE)

DSE's extensive project portfolio is a collection of various current and completed projects at the local, regional, and international levels.

Many of these projects have become a significant part of the natural landscape of various global cities, and have involved the construction of commercial towers, hospitals, residential complexes, airports, and water treatment plants, to name just a few.

DSE is proud to have contributed to shaping the skyline of so many cities around the globe.

## DSE's major clients include:

ADNEC, ARAMCO, Emicool, Zabeel Investments, Dubai Properties Group, Cayan, Dubai Festival City, Arabtec, Meydan, DCC, DAMAC, Qatari Diar, Carillion, CCC, IFA Hotels & Resorts, Gulf Contractors, FIBREX Industrial and Construction, Dohaland, Wahal AlKhartoum Urban Development Company, Meydan LLC, Saudi Basic Industry Company, EMICOOL, Rayadah Investment Company, Al Nahda Real Estate and Trading, Dubai Festival City, TECOM, Dubai Airport Free Zone Authority, and Tabreed.

## Globally, some of DSE's major clients include:

HongKongAir Cargo Terminals Ltd., Ministry of Works (Tanzania), HSBC, HongKong Airport Authority, Texport Terminal (HK) LTD/Unilever, Brooke Management Ltd., Bank of China, Union Carbide, Dupont Iberica, Magrini (Italy), Intel Corp., Pepsi, West Africa Portland Cement Co., Bestland Development Corp. Ltd., Trafalgar House Developments Ltd., British Airways, Gulf Air, National Methanol Company (KSA), and the Governments of Hong Kong, Singapore, the People's Republic of China, Jamaica, Jordan, Mauritius, and Barbados, among others.

Complete details of DSE projects over the last four decades can be provided upon request.



# DSE Completed Projects List - MEP, Infrastructure, Rail

S.No	Project Name	Client	Location	Start Date	Completion Date	Vertical	Project Value(USD)
1	Sheikh Jaber Al Ahmad Cultural Center	Amiri Diwan	Kuwait	2014	2016	Leisure	17,220,076
2	Nation Tower O&M	International Capital Trading	UAE, Abu Dhabi	2015	2017	Infrastructure & Utilities	3,252,000
3	Habtoor City	Habtoor	UAE, Dubai	2013	2018	Hospitality	54,422,866
4	National Rehabilitation Centre	UAE Ministry of Health	UAE, Abu Dhabi	2014	2017	Hospital	20,488,773
5	Government Center for Research, Testing & Quality Control	Ministry of Public Works	Kuwait	2011	2014	Government	10,265,814
6	Judges Assembly Building	Towell Construction and Company	Oman, Ghubrah	2014	2016	Government	3,714,236
7	New KISR administration building & Mosque	Kuwait institute for scientific research (KISR)	Kuwait	2011	2016	Education	18,395,677
8	Qatar Entertainment City-PK-4a	Qatar Entertainment City Co.	Qatar, Doha	2014	2016	Commercial	2,838,460
9	DICEC New Halls Expansion	DICEC	UAE, Dubai	2015	2017	Commercial	4,378,721
10	Souk Al Safat (Renovation)	International Resorts Company	Kuwait	2015	2017	Commercial	1,134,306
11	New Muscat International Airport MC2	Ministry of Transport & Communication	Oman	2010	2016	Airport	62,906,392
12	South Airfield Development and Rehabilitation	Abu Dhabi Airports Company	UAE, Abu Dhabi	2013	2014	Airport	25,000,000
13	Dubai Int'l Airport APM - EI Works	Bombardier	UAE, Dubai	2013	2014	Airport	7,791,595
14	Dubai Int'l Airport APM - MEP Works	Bombardier	UAE, Dubai	2013	2014	Airport	1,290,217
15	Doha Airport Facilities	Government of Qatar	Qatar, Doha	2008	2012	Airport	7,671,233
16	Dubai International Airport (Super Grate)	Dubai Civil Aviation	UAE, Dubai	1999	2002	Airport	1,633,200
17	HACTL Superterminal, Phase I	Hong Kong Air Cargo Terminals Ltd.	Hong Kong, Chek Lap Kok	1996	1998	Airport	109,340,000

## DSE Completed Projects List - MEP, Infrastructure, Rail

S.No	Project Name	Client	Location	Start Date	Completion Date	Vertical	Project Value (USD)
18	Phase II Extension to Military Airbase.	Central Military Command, Government of Dubai.	UAE, Dubai	1986	1987	Airport	9,570,000
19	Military Airbase, Operations/ Accommodation Bldgs & Hangars.	Central Military Command - Dubai Government.	UAE, Dubai	1985	1986	Airport	78,121,400
20	Royal Flight Hangar	Government of Dubai.	UAE, Dubai	1983	1985	Airport	10,888,000
21	Intelligence Squadron Accommodation	Central Military Command	UAE, Dubai Airbase	1985	1985	Airport	2,332,000
22	Dar Es Salaam International Airport	Ministry of Works.	Tanzania	1983	1983	Airport	28,380,000
23	Command Headquarters Extension	Central Military Command	UAE, Dubai Airbase	1983	1983	Airport	2,530,000
24	HAECO Engine Preparation Room Extension	Hong Kong Engineering Company.	Hong Kong, Kai Tak Airport	1979	1979	Airport	418,000
25	Airport Upgrades	Civil Aviation Authority, Nigeria	Nigeria	1977	1977	Airport	50,600,000
26	Chiller & Control Replacement	Government of Hong Kong.	Hong Kong, Kai Tak Airport	1976	1976	Airport	3,080,000
27	International Airport Terminal.	Government of Abu Dhabi.	UAE, Abu Dhabi	1969	1971	Airport	7,480,000
28	Sahara Mall Expansion Phase 1A	Al Nahda Real Estate	UAE, Sharjah	2008	2015	Central Cooling Plant	43,161,112
29	Masdar Chiller Farm	MASDAR	UAE, Abu Dhabi	2012	2014	Central Cooling Plant	3,171,592
30	Assila Tower	Assila Investment Company	KSA	2011	2015	Commercial	38,024,690
31	KREC Offices at Souk Al-Kuwait	Kuwait Real Estate Co.	Kuwait	2014	2015	Commercial	300,000
32	RAH Res & Infr Package Ph-1	Al Turki Enterprises LLC	Oman, Muscat	2014	2015	Commercial	8,341,388
33	Qatar Entertainment City-Pk-5	Qatar Entertainment City Co.	Qatar	2012	2015	Commercial	12,313,413
34	Qatar Entertainment City-PK6	Qatar Entertainment City Co.	Qatar, Doha	2014	2015	Commercial	1,800,000
35	Rabban Suites	Al Sarh Real Estate	Qatar, Doha	2012	2015	Commercial	18,300,000
36	Khalifa Street Bridge Renovation	Arabian Construction Company	UAE, Abu Dhabi	2015	2015	Commercial	2,670,299
37	Mall of Emirates Expansion	MAL/Khansaheb	UAE, Dubai	2014	2015	Commercial	34,905,150
38	Multipurpose Admin Complex	Qatar Petroleum	Qatar	2012	2014	Commercial	44,000,000
39	Al Wajba Club House	Private Engineering Office	Qatar	2011	2014	Commercial	42,158,481
40	VIP Golf Club	Private Engineering Office	Qatar, Doha	2011	2014	Commercial	6,000,000

## DSE Completed Projects List - MEP, Infrastructure, Rail

S.No	Project Name	Client	Location	Start Date	Completion Date	Vertical	Project Value (USD)
41	Central Market Re-Development	ACC	UAE, Abu Dhabi	2012	2014	Commercial	30,000,000
42	Information Technology and Communication Complex	Saudi Arabian Public Pensions Agency	KSA, Riyadh	2010	2013	Commercial	154,351,438
43	Arabella Tourist and Entertainment Complex	ABC Real Estate Co.	Kuwait	2010	2013	Commercial	2,720,000
44	Paindor Maintenance Contract	Saudi Malco	KSA	2009	2011	Commercial	544,000
45	UPDC -Aramco	UPDC-Aramco	KSA, Dhahran	2009	2010	Commercial	12,000,000
46	Al Fardan Jewellery & Maze Restaurant	Construction Development Company	Qatar, Doha	2009	2010	Commercial	1,152,684
47	ARAMCO-TOWN CENTER BUILDING	ARAMCO	KSA, Jeddah	2009	2009	Commercial	2,738,736
48	Pain Dor	Saudi MALCO	KSA, Riyadh	2006	2009	Commercial	13,713,935
49	IPG Building	Independent Petroleum Group (IPG)	Kuwait	2008	2009	Commercial	181,075
50	Ali Bin Ali Building	Nabil Ali Bin Ali	Qatar, Doha	2006	2009	Commercial	11,780,822
51	Al Hitmi Office Building	Ali Bin Khalifa Al Hitmi & Co	Qatar, Doha	2007	2009	Commercial	8,700,000
52	Jeddah Gate	Imar Al Sharq	KSA, Jeddah	2007	2008	Commercial	124,925
53	Park Place	H.E. Humaid Bin Draï	UAE, Dubai	2005	2007	Commercial	16,876,400
54	The Jewels Development at Dubai Marina	Cayan	UAE, Dubai	2005	2007	Commercial	13,065,600
55	Supplies & Development Building	Al Areel Contracting	KSA	2004	2006	Commercial	6,303,696
56	Siemens Rabigh/ Dhaban	Siemens Limited	KSA, Riyadh	2005	2006	Commercial	399,863
57	Supplies & Development Building	Sondoz Real Estate	UAE, Dubai	2003	2006	Commercial	8,438,200
58	Cinema Complex Carrefour Alexandria	Arabian Cinemas	Egypt, Alexandria	2004	2005	Commercial	491,000
59	QTEL Tower	Qatar Telecom	Qatar, Doha	2004	2005	Commercial	4,000,000
60	DAFZA Offices Phase IV	DAFZA	UAE, Dubai	2004	2005	Commercial	6,532,800
61	Smart Village Office Building	Medom	Egypt, Giza	2003	2004	Commercial	1,100,000
62	DAFZA Offices Phase II	DAFZA	UAE, Dubai	2002	2004	Commercial	4,355,200
63	Tamimi Market	Tamimi Company	KSA, Dammam	2001	2002	Commercial	1,308,233



## DSE Completed Projects List - MEP, Infrastructure, Rail

S.No	Project Name	Client	Location	Start Date	Completion Date	Vertical	Project Value (USD)
64	GOSI Building	GOSI	KSA, Yanbu	2000	2001	Commercial	877,429
65	Etisalat Telecom Building	Etisalat	UAE, Dubai	1998	2001	Commercial	1,361,000
66	Dubai Internet City - Phase I	Dubai Internet City	UAE, Dubai	1997	2000	Commercial	19,598,400
67	Refurbishment of Office Building	Saudi Media System	KSA, Riyadh	1997	1998	Commercial	3,020,311
68	Standard Chartered Bank Building	Al Bwardy Investment Co.	UAE, Dubai	1994	1997	Commercial	5,716,200
69	Twin Towers Complex	Sheikha Miriam	UAE, Dubai Creek	1995	1997	Commercial	18,883,920
70	Dubai Chamber of Commerce & Industry Headquarters	Dubai Chamber of Commerce & Industry.	UAE, Dubai	1992	1995	Commercial	14,971,000
71	Al Salam Tower	Mr Abdul Salam Al Rafi.	UAE, Dubai	1994	1995	Commercial	12,751,200
72	Sky Tower	Al Nekhreh Contracting Ltd	UAE, Dubai	1991	1994	Commercial	7,621,600
73	Regga Commercial Development.	Sheikha Mariam	UAE, Dubai	1994	1994	Commercial	6,831,000
74	BBME Headquarters	British Bank of the Middle East	UAE, Dubai	1991	1994	Commercial	6,532,800
75	Ducat Place	Brooke Management Ltd	Russia, Moscow	1992	1992	Commercial	2,530,000
76	Enam Farm Offices	H.H. Sayyid Shabib Bin Taimur	Oman	1990	1990	Commercial	111,320
77	City Tower I	Al Naboodah Real Estate Ltd	UAE, Dubai	1989	1990	Commercial	8,602,000
78	ABN-Amro Bank Building	Al Bawardy Investment Co.	UAE, Dubai	1987	1990	Commercial	5,988,400
79	Al Sherouq Building,	Dubai Royal Family	UAE, Dubai, Karama	1988	1989	Commercial	4,857,600
80	Bank of China	Bank Of China	Hong Kong	1985	1988	Commercial	24,895,200
81	Deira Tower	Deira Tower Property Co.	UAE, Dubai	1987	1987	Commercial	435,160
82	New Hong Kong & Shanghai Bank Headquarters	Hong Kong & Shanghai Banking Corp.	Hong Kong, Central	1983	1985	Commercial	106,057,600
83	Redevelopment of 1 Queens Road Central.	Hong Kong & Shanghai Banking Corporation.	Hong Kong, Central	1983	1983	Commercial	3,036,000
84	New Municipality Building	Municipality of Muscat	Oman, Muscat	1983	1983	Commercial	7,084,000
85	Shen Zen International Trade Centre	Government of Peoples Republic of China	China, Shenzhen	1982	1982	Commercial	2,125,200
86	Taikoo Shing Commercial Centre, Phase V to VII	Quarry Bay Development Ltd (Swire Group)	Hong Kong, Quarry Bay	1979	1982	Commercial	13,075,040

## DSE Completed Projects List - MEP, Infrastructure, Rail

S.No	Project Name	Client	Location	Start Date	Completion Date	Vertical	Project Value (USD)
87	Keck Seng Tower	Singapore Development Organization.	Singapore.	1982	1982	Commercial	7,691,200
88	Taikoo Shing Stage XIA Commercial Centre	Quarry Bay Development Ltd (Swire Group)	Hong Kong, Quarry Bay	1980	1981	Commercial	4,604,600
89	Taikoo Shing Stage VII	Quarry Bay Development Co. (Swire Group)	Hong Kong, Quarry Bay	1981	1981	Commercial	3,542,000
90	Sun Hung Kai Centre	Sun Hung Kai Properties Ltd	Hong Kong, Wanchai	1977	1981	Commercial	53,156,312
91	Taikoo Shing Stage XI Commercial Centre.	Quarry Bay Development Ltd (Swire Group)	Hong Kong, Quarry Bay	1979	1980	Commercial	7,792,400
92	MTRC Administration Building	Mass Transit Railway Corporation.	Hong Kong, Kowloon Bay	1978	1979	Commercial	8,197,200
93	Taikoo Shing Stage VI	Quarry Bay Development Co (Swire Group)	Hong Kong, Quarry Bay	1979	1979	Commercial	4,452,800
94	Taikoo Shing Stage VI Towers 33-35	Quarry Bay Development Ltd (Swire Group)	Hong Kong, Quarry Bay	1979	1979	Commercial	425,040
95	Jebson Scomber Building	Jebson & Co. Ltd.	Hong Kong, Aberdeen	1976	1976	Commercial	961,400
96	New Mercury House, Phase I & 2	Cable & Wireless Ltd	Hong Kong	1972	1974	Commercial	15,621,232
97	4 Buildings for Dubai Int'l Properties at Jabel Ali	Dubai International Properties	UAE, Dubai	2006	2007	Commercial / Government	6,197,721
98	ITCC District Cooling Plant	Rayadah Investment Company	KSA, Riyadh	2010	2015	District Cooling Plant	74,480,607
99	Khalifa City (RLCC) District Cooling Plant	Private Property Management	UAE, Abu Dhabi	2010	2013	District Cooling Plant	52,038,419
100	Dubai Sports City	EMICOOL	UAE, Dubai	2012	2013	District Cooling Plant	1,880,109
101	Burjuman Center	Burjuman Center	UAE, Dubai	2011	2011	District Cooling Plant	1,642,771
102	Motor City District Cooling Plant	EMICOOL	UAE, Dubai	2007	2010	District Cooling Plant	88,058,079
103	Dubai Investment Park	EMICOOL	UAE, Dubai	2007	2010	District Cooling Plant	54,893,620
104	Dubai Festival City	Dubai Festival City	UAE, Dubai	2005	2007	District Cooling Plant	108,800,000
105	Jumeirah Beach Residence	TECOM	UAE, Dubai	2004	2006	District Cooling Plant	73,440,000
106	JBR District Cooling Scheme	TECOM	UAE, Dubai	2004	2004	District Cooling Plant	77,577,000
107	DC in Mussafah	Tabreed	UAE, Abu Dhabi	2001	2003	District Cooling Plant	25,296,000
108	DC, Sheikh Zayed Road	Tabreed	UAE, Dubai	2001	2002	District Cooling Plant	6,800,000

## DSE Completed Projects List - MEP, Infrastructure, Rail

S.No	Project Name	Client	Location	Start Date	Completion Date	Vertical	Project Value (USD)
109	Hadeed District Cooling Works	Zamil Industrial Investment Co.	UAE	2012	2016	District Cooling Plant	21,202,997
110	Extension to College of Health Sciences for Girls	Public Authority for Applied Educ. & Training (PAAET)	Kuwait	2010	2014	Education	18,618,633
111	Nursing Institute	Public Authority for Applied Educ. & Training (PAAET)	Kuwait	2010	2013	Education	7,493,112
112	Princess Noura University	Saudi Oger	KSA	2010	2012	Education	71,000,000
113	KAUST-LFO (I&II)	Aramco	KSA	2009	2012	Education	26,656,000
114	College of Basic Education - Boys Campus	Public Authority for Applied Educ. & Training (PAAET)	Kuwait	2008	2011	Education	35,133,400
115	American School of Dubai New Campus at Barsha	American School of Dubai	UAE, Dubai	2007	2011	Education	23,500,000
116	Mina Health College	Ministry of Health	KSA, Mina	2006	2009	Education	712,857
117	Special Training Center	Public Authority for Applied Educ. & Training (PAAET)	Kuwait	2006	2009	Education	36,824,874
118	Facility Management Office Complex, Sabah AlSalem University City	Kuwait University Construction Program	Kuwait	2007	2009	Education	6,356,610
119	Emirates Aviation College	Emirates Airlines	UAE, Dubai	2000	2003	Education	8,438,200
120	College of Agricultural Research	Sultan Qaboos University / Bogest	Oman, Sultan Qaboos University	1995	1995	Education	3,036,000
121	International School	Hong Kong International School	Hong Kong	1974	1974	Education	2,310,000
122	Student Center for Qatar Foundation Society	Qatar Foundation	Qatar, Doha	2008	2010	Education	30,232,263
123	Zayed University	Dubai Municipality	UAE, Dubai	2003	2006	Education	38,652,400
124	King Abdullah University of Science & Technology	Aramco	KSA, Jeddah	2008	2010	Education / Government	206,666,667
125	King Abdullah University for Science & Technology (KAUST) LAB FIT OUT 1	Aramco	KSA, Jeddah	2009	2010	Education / Government	24,000,000
126	DAFZA Offices	Dubai Airport Free Zone Authority	UAE, Dubai	2004	2005	Enhancement of Chiller Capacity	5,440,000



## DSE Completed Projects List - MEP, Infrastructure, Rail

S.No	Project Name	Client	Location	Start Date	Completion Date	Vertical	Project Value(USD)
127	Abu Dhabi National Exhibition Centre (Phase II)	ADNEC	UAE, Abu Dhabi	2007	2009	Exhibition centre / Government	57,545,258
128	Government Complex	Al Fouzan	KSA, Makkah	2013	2015	Government	81,325,216
129	Oman National Museum	Carillion Alawi	Oman	2010	2015	Government	12,960,335
130	Presidential Palace Roads & Infrastructure	CCEP	UAE, Abu Dhabi	2012	2015	Government	52,417,326
131	Presidential Palace Wings Package	The Ministry of Presidential Affairs	UAE, Abu Dhabi	2011	2015	Government	70,572,207
132	Presidential Palace	The Ministry of Presidential Affairs	UAE, Abu Dhabi	2010	2015	Government	138,208,781
133	Abu Dhabi Court House Complex	Abu Dhabi Judiciary Department	UAE, Abu Dhabi	2010	2015	Government	42,234,332
134	Al Taif Correctional Facility	Bin Laden Group	KSA	2012	2014	Government	6,184,200
135	Immigration General Directorate	Ministry of Public Works	Kuwait	2010	2014	Government	15,000,000
136	Military Technical College for MOD	Oman Shappoorji/ Douglas OHI	Oman	2012	2014	Government	10,019,520
137	Presidential Palace Technical Building	Ministry of Presidential Affairs (CCC)	UAE, Abu Dhabi	2011	2014	Government	40,000,000
138	Presidential Palace Hardscape/ Landscape Package 1	The Ministry of Presidential Affairs	UAE, Abu Dhabi	2013	2014	Government	68,392,400
139	Public Institution for Social Security Building	Wafra Real Estate Company	Kuwait	2011	2013	Government	5,440,000
140	New Office for DRC	Galfar - Royal Court Affairs (DRC)	Oman	2010	2012	Government	9,000,000
141	Sohar court house	Government of Oman	Oman	2010	2012	Government	8,858,964
142	Muscat Royal Orchestra (Nagamat)	OSCO	Oman	2010	2012	Government	5,000,000
143	Kuwait Chamber of Commerce & Industry HQ (Upgradation of Electrical Power Distribution System)	Kuwait Chamber of Commerce and Industry	Kuwait	2011	2011	Government	1,358,605
144	Court Complex (Supply & Installation of Cond. Water Coils for 28 chillers)	Kuwait Real Estate Co.	Kuwait, Al Rege'e	2009	2010	Government	152,124
145	Artillery Battalion Complex	Ministry of Defense	KSA, Riyadh	2004	2007	Government	3,920,000
146	Smart Building Technology, State	State Audit Bureau ,	Kuwait	2006	2007	Government	5,440,000

## DSE Completed Projects List - MEP, Infrastructure, Rail

S.No	Project Name	Client	Location	Start Date	Completion Date	Vertical	Project Value (USD)
147	Royal Saudi Navy Force	Ministry of Defense	KSA, Riyadh	2004	2006	Government	2,399,400
148	National Guard site # 7	Saudi Arabian National Guard	KSA, Riyadh	2004	2005	Government	4,100,000
149	Hunter Project	British Aerospace/ Government of Saudi Arabia.	KSA, Dammam	1998	2001	Government	41,998,000
150	Tabuk Military Cantonment.	Ministry of Defense & Aviation.	KSA, Tabuk	1996	1997	Government	10,120,000
151	SANG Project.	Saudi Arabia National Guard.	KSA	1986	1989	Government	37,290,000
152	Wadi Midhaiya Camp	Central Military Command.	UAE, Dubai	1986	1988	Government	6,780,400
153	Extension to Army Camp.	Central Military Command	UAE, Dubai	1987	1988	Government	4,048,000
154	Tawi Murrah Camp	Central Military Command.	UAE, Dubai	1986	1987	Government	8,905,600
155	Dumiat Zamul Camp.	Central Military Command	UAE, Dubai	1985	1986	Government	5,262,400
156	Extension to Police Forensic Laboratory	Khansaheb Civil engineering.	UAE, Dubai	1986	1986	Government	485,760
157	Ammunition Bunker Complex.	Central Military Command	UAE, Dubai	1984	1985	Government	11,132,000
158	CAS Camp	Central Military Command	UAE, Dubai Airbase	1985	1985	Government	3,630,000
159	Marina & Fish Farm at Beach Palace Complex	Government of Dubai	UAE, Dubai	1984	1984	Government	1,214,400
160	Government Cabinet Building	Royal Palace Properties	Oman, Muscat	1983	1983	Government	8,602,000
161	Military Hangar Complex	Central Military Command	UAE, Dubai Airbase	1983	1983	Government	4,763,000
162	Combined Services Operational Earth Station.	Property Services Agency.	Hong Kong, Chung Hom Kok	1980	1981	Government	15,510,000
163	Permanent Army Camp	Ministry of Defense	Oman, Ibri	1981	1981	Government	54,648,000
164	Ammunition Bunker Complex	Central Military Command	UAE, Dubai Airbase	1981	1981	Government	5,060,000
165	Armaments Stores	Central Military Command	UAE, Dubai Airbase	1981	1981	Government	3,520,000
166	Aberdeen Tunnel Control Building	Public Works Department	Hong Kong, Aberdeen	1979	1979	Government	779,240
167	MF & HF Transmitting Stations	Government of Dubai.	UAE, Dubai	1978	1978	Government	350,900
168	British High Commission Chancery	Property Service Agency	Pakistan, Islamabad	1969	1971	Government	17,204,000
169	British High Commission Residence.	Property Service Agency	Pakistan, Islamabad	1969	1971	Government	14,190,000
170	Special Forces Facilities	Ministry of Public Works	Kuwait	2006	2015	Government	16,003,150

## DSE Completed Projects List - MEP, Infrastructure, Rail

S.No	Project Name	Client	Location	Start Date	Completion Date	Vertical	Project Value (USD)
171	State Audit Bureau Head Quarters & Car Park	State Audit Bureau , Kuwait	Kuwait	2004	2007	Government	22,680,000
172	Police H.Q	Dubai Police	UAE, Dubai	2003	2006	Government	12,249,000
173	Al Sager Cardiac Outpatient Clinic	Mr. Hisham Abdullah Hamed Al Sager	Kuwait	2013	2015	Hospital	2,274,000
174	Danat Al Emarat Women & Children Hospital (Phase II)	Tema SA	UAE, Abu Dhabi	2011	2015	Hospital	35,250,491
175	King Khaled Hospital Extension	ABV Rock	KSA	2009	2012	Hospital	54,661,211
176	Jizan Hospital	Ministry of Health	KSA, Jizan	2006	2010	Hospital	121,095
177	Mina Hospital	Ministry of Health	KSA, Mina	2008	2009	Hospital	6,769,945
178	Khamis Mushayt General Hospital	Ministry of Health	KSA	2005	2007	Hospital	5,280,000
179	Tabarjal Hospital	Ministry of Health	KSA, Tabarjal	2005	2007	Hospital	8,916,684
180	Rashid Hospital	DOHMS	UAE, Dubai	2003	2006	Hospital	12,249,000
181	Al Wasel Hospital	Department of Health & Medical Science	UAE, Dubai	2005	2006	Hospital	1,143,240
182	King Fahad Hospital Network 1 & 2	Ministry of Health	KSA, Jeddah	2003	2004	Hospital	749,813
183	Najran Paediatric Hospital	Ministry of Health	KSA, Najran	2002	2004	Hospital	3,486,667
184	American Hospital Expansion	Mr. Obaid Al Mulla	UAE, Dubai	2001	2004	Hospital	3,266,400
185	King Fahd Hospital - Long Term Care Center & Emergency Care Center	Ministry of Health	KSA, Riyadh	2000	2001	Hospital	3,293,333
186	Equine Hospital	Sheikh Mohammed, Engineers Office.	UAE, Dubai	1995	1995	Hospital	1,922,800
187	Hospital Computer Room Sultan Qaboos University Hospital	Sultan Qaboos University Hospital	Oman, Seeb	1989	1989	Hospital	303,600
188	Extension to Dubai Police X Ray Clinic.	Dubai Police Force	UAE, Dubai	1987	1987	Hospital	354,200
189	Khoula Hospital	Government of the Sultanate of Oman	Oman	1984	1986	Hospital	33,396,000
190	Prince Of Wales Hospital.	Public Works Department, Hong Kong Government.	Hong Kong.	1980	1983	Hospital	42,200,400
191	Regional Hospitals	Plateau State Government	Nigeria, Plateau State	1983	1983	Hospital	24,288,000
192	Shatin Teaching Hospital.	Public Works Department, Hong Kong Government.	Hong Kong	1979	1982	Hospital	30,866,000



## DSE Completed Projects List - MEP, Infrastructure, Rail

S.No	Project Name	Client	Location	Start Date	Completion Date	Vertical	Project Value (USD)
193	Prince Philip Dental Teaching Hospital.	Public Works Department, Hong Kong Government.	Hong Kong, Sai Ying Pun	1979	1981	Hospital	7,610,240
194	Sokoto Teaching Hospital	Ministry of Health, Sokoto State Government.	Nigeria, Sokoto	1980	1980	Hospital	54,648,000
195	Dental Technology Building	Hong Kong polytechnic.	Hong Kong, Hung Hom	1978	1978	Hospital	607,200
196	Dental Nurse Training School	Public Works Department	Hong Kong, Oi Kwan Road	1977	1977	Hospital	910,800
197	Queen Mary Hospital	-	Hong Kong	1974	1975	Hospital	11,638,000
198	Montego Bay Hospital	Government of Jamaica	Jamaica, County of Cornwall	1968	1968	Hospital	52,118,000
199	King Hussein Medical City. Phase I	Government of Jordan	Jordan, Amman	1967	1967	Hospital	52,624,000
200	Mauritius North Hospital	Government of Mauritius	Mauritius, Port Louis	1966	1966	Hospital	8,096,000
201	Queen Victoria Hospital. Bridgetown	Government of Barbados	Barbados	1964	1964	Hospital	10,120,000
202	Sharm El Sheikh Resort Phase 1	Qatari Diar Real Estate Investment	Egypt	2011	2014	Hospitality	20,475,000
203	Duqm Hotel for Musstir	Carillion Alawi LLC	Oman	2012	2014	Hospitality	6,837,718
204	Kingdom of Sheba	IFA Hotels & Resorts	UAE, Dubai	2009	2014	Hospitality	21,798,365
205	Rosewood Hotel	Mubadala	UAE, Abu Dhabi	2010	2012	Hospitality	61,790,000
206	Centro Hotel Capital Center	Crystal Hospitality Investments	UAE, Abu Dhabi	2009	2012	Hospitality	17,700,000
207	Park Rotana Mixed Use Development	Mada Tourism Investment Company	UAE, Abu Dhabi	2007	2010	Hospitality	57,741,335
208	Yas Island Abu Dhabi Rotana & Centro Hotels	Aldar	UAE, Abu Dhabi	2008	2009	Hospitality	40,421,700
209	Abu Dhabi National Exhibition Centre (Phase II B - Aloft Hotel)	ADNEC	UAE, Abu Dhabi	2008	2009	Hospitality	39,740,867
210	Shangri - La Qaryat Al Beri, Between the Bridges Resort	Al Jaber Transport & Contracting Establishment	UAE, Abu Dhabi	2006	2007	Hospitality	19,054,000
211	West Bay Complex - Four Season Hotel	H.H. Sheikh Hamad Bin Jaber Al Thani	Qatar, Doha	2001	2005	Hospitality	37,730,000
212	Trader's Hotel	HE Mohd. Zubair Ali Al Juma	UAE, Dubai	2000	2003	Hospitality	9,527,000

## DSE Completed Projects List - MEP, Infrastructure, Rail

S.No	Project Name	Client	Location	Start Date	Completion Date	Vertical	Project Value (USD)
213	Officers Accommodation Hotel	Abu Dhabi Armed Forces.	UAE, Abu Dhabi	1995	1997	Hospitality	11,840,400
214	Jumeirah Beach Hotel	H.H.Shaikh Mohammed Bin Rashid Al Maktoum	UAE, Dubai	1994	1997	Hospitality	35,658,200
215	Baynunah Tower Complex	Department of Social Services & Commercial Building	UAE, Abu Dhabi	1992	1994	Hospitality	23,782,000
216	Royal Abjar Hotel	Al Mulla Enterprises (Private) Ltd	UAE, Dubai	1992	1993	Hospitality	23,782,000
217	Sheraton Hotel	Dubai Sheraton Hotel.	UAE, Dubai	1990	1990	Hospitality	1,012,000
218	Hyatt Hotel	Government of the Peoples Republic Of China	China, Shanghai	1987	1989	Hospitality	10,120,000
219	Fuzhou Hotel	Fuzhou Hotels - China	China, Fuzhou	1985	1986	Hospitality	24,288,000
220	Bustan Palace Hotel	Government of the Sultanate of Oman	Oman, Muscat	1983	1985	Hospitality	136,417,600
221	Prince Hotel	Hong Kong & Kowloon Wharf & Godown Co.	Hong Kong	1982	1984	Hospitality	30,360,000
222	Resort Hotel	Municipality of Muscat	Oman, Sohar	1984	1984	Hospitality	5,566,000
223	Royal Garden Hotel	Sun Hung Kai Properties Ltd/ Mandarin Hotels	Hong Kong.	1980	1982	Hospitality	28,133,600
224	Glass Tower Hotel	Bestland Development Corporation Ltd	Singapore	1982	1982	Hospitality	46,552,000
225	Kun Lun Hotel	Government of Peoples Republic of China	China, Beijing	1981	1981	Hospitality	1,619,200
226	Great Wall Hotel	Eaton Sung Pacific Development Corporation	China, Beijing	1980	1980	Hospitality	1,012,000
227	Intercontinental Hotel & Conference Center	Intercontinental Hotel Company (SA) Ltd	KSA, Riyadh	1972	1975	Hospitality	14,168,000
228	Holiday Inn Hotel	Holiday Inns of America	West Indies, Grenada	1972	1972	Hospitality	17,963,000
229	Central Hotel	Hotel Corporation (Nigeria) Ltd	Nigeria, Kano	1970	1970	Hospitality	17,204,000
230	La Toc Hotel	Trafalgar House Developments Ltd	St Lucia.	1969	1969	Hospitality	31,372,000
231	Pegasus Hotel	British Airways Corp.	Guyana, Georgetown	1968	1968	Hospitality	17,204,000
232	Gulf Hotel Phase 1	Gulf Air Ltd	Bahrain	1967	1967	Hospitality	14,168,000

## DSE Completed Projects List - MEP, Infrastructure, Rail

S.No	Project Name	Client	Location	Start Date	Completion Date	Vertical	Project Value (USD)
233	British Industries Printing Press #2	British Industries Printing & Packaging Co.	Kuwait	2011	2013	Industrial	3,264,000
234	British Industries Printing Press #1	British Industries Printing & Packaging Co.	Kuwait	2011	2012	Industrial	2,535,000
235	Ceramic Tiles Factory	National Industries Company	Kuwait	2008	2009	Industrial	4,419,000
236	OGD III -Process Control Bldg (Onshore Gas Dev.)	GASCO	UAE, Abu Dhabi	2006	2007	Industrial	8,689,095
237	380/110KV Substation	SEC	KSA, Jeddah	2003	2004	Industrial	2,150,000
238	Kestrel Project	Dubal	UAE, Dubai	2002	2004	Industrial	2,722,000
239	DUBAL( Dubai Aluminium)	Dubal	UAE, Dubai	1999	2002	Industrial	680,500
240	Hadeed Steel Mill Phase II	Hadeed Steel Mill (Sabic)	KSA	1999	1999	Industrial	18,700
241	CMC Colour Coating Plant	CMC (SIDC)	KSA	1998	1998	Industrial	6,780,400
242	Hadeed Steel Mill - HYL Direct Expansion	Hadeed Steel (Sabic)	KSA	1998	1998	Industrial	1,265,000
243	Hadeed Steel Mill	Hadeed Steel Mill (Sabic)	KSA	1996	1996	Industrial	556,600
244	Central Food Distribution Warehouse.	Spinneys Supermarkets Ltd	UAE, Dubai	1995	1996	Industrial	5,667,200
245	SRF Tyre Cord Factory.	SRF Overseas Ltd.	UAE, Dubai, Jebel Ali	1995	1996	Industrial	4,756,400
246	Polyester Plant	IBN-RUSHD	KSA, Yanbu	1994	1995	Industrial	3,036,000
247	OGD, Habshan	Abu Dhabi National Oil Company	UAE, Abu Dhabi	1995	1995	Industrial	4,655,200
248	Addcap Musafah Offshore Supply Base, Contracts 4, 5 & 7.	Addcap.	UAE, Abu Dhabi	1994	1994	Industrial	10,120,000
249	Nitrogen Generating Plant	Union Carbide	Germany, Hulb	1992	1992	Industrial	2,226,400
250	Lekhwair Oilfield Development	Petroleum Development Oman Llc.	Oman	1991	1991	Industrial	1,275,120
251	Dupont NOMEX Expansion Project	DuPont Iberica/ E.I, DuPont d Nemours	Spain, Asturias	1991	1991	Industrial	8,500,800
252	Dubai Smelter Extension	Dubai Aluminium Company.	UAE, Dubai, Jebel Ali	1990	1990	Industrial	2,024,000
253	Qatif Water Well	ARAMCO	KSA, Qatif	1989	1989	Industrial	1,619,200
254	Container Cranes.	Magrini, Italy.	UAE, Fujairah Port	1989	1989	Industrial	374,440



## DSE Completed Projects List - MEP, Infrastructure, Rail

S.No	Project Name	Client	Location	Start Date	Completion Date	Vertical	Project Value (USD)
255	Utilities Upgrade	ARAMCO	KSA, Dhahran, Abqaiq & Ras-Tanura	1988	1988	Industrial	62,238,000
256	Camel Feed Mill.	Government of Dubai.	UAE, Dubai	1987	1988	Industrial	890,560
257	Dugas Tripod 6	Dubai Natural Gas Company.	UAE, Dubai	1988	1988	Industrial	242,880
258	5-Furnaces on Dubai Smelter Complex	Dubai	UAE, Dubai	1987	1987	Industrial	5,060,000
259	Bitumen Storage & Blending Facilities.	Dubai Bitumen company.	UAE, Dubai	1987	1987	Industrial	1,315,600
260	Milking Parlour.	Government of Dubai	UAE, Dubai	1987	1987	Industrial	263,120
261	Reverse Osmosis Plant.	Central Military Command	UAE, Dubai Airbase	1987	1987	Industrial	1,540,000
262	Grain Storage Facility.	Gulf Investment Co.	UAE, Dubai, Jebel Ali	1987	1987	Industrial	607,200
263	Upgrade of Boiler Plant	ARAMCO	KSA, Abqaiq	1986	1986	Industrial	6,476,800
264	Jiuzho Harbour	Government of the Peoples Republic of China.	China, Silver Bay	1985	1985	Industrial	6,072,000
265	High Security Banknote Printing Facility	Thomas De La Rue Ltd	Hong Kong.	1984	1985	Industrial	4,452,800
266	Glass Reinforced Concrete Factory	GRC Company Ltd	KSA	1985	1985	Industrial	21,758,000
267	LNG Loading Berth	Abu Dhabi gas Company	UAE, Abu Dhabi, Das Island	1985	1985	Industrial	2,024,000
268	GOSP Expansion	ARAMCO	KSA, Safaniya & Ras-Tanura	1984	1984	Industrial	20,695,400
269	Printed Circuit Factory	Intel Corp.	Singapore.	1984	1984	Industrial	7,084,000
270	Pepsi Cola Plant	Pepsi Cola USA.	China, Shenzhen	1981	1982	Industrial	2,631,200
271	Wu Han Plastics Factory	Wu Han Plastics Company.	China, Wu Han	1982	1982	Industrial	121,440
272	New Perfume factory	Roche Nigeria Ltd	Nigeria, Agege	1982	1982	Industrial	4,857,600
273	Guinness Harp Lager Brewery	Guinness Nigeria Ltd.	Nigeria, Ikeja	1982	1982	Industrial	14,370,400
274	Ruwais Housing Company Phase II	Abu Dhabi National Oil Company.	UAE, Abu Dhabi, Ruwais	1982	1982	Industrial	9,006,800
275	Fertilizer Plant	Chiyoda Chemical Engineering & Construction Co Ltd.	UAE, Abu Dhabi, Ruwais	1982	1982	Industrial	7,488,800

## DSE Completed Projects List - MEP, Infrastructure, Rail

S.No	Project Name	Client	Location	Start Date	Completion Date	Vertical	Project Value(USD)
276	Oil Terminal Warehouse	Chiyoda Chemical Engineering & Construction Ltd	UAE, Abu Dhabi, Ruwais	1982	1982	Industrial	910,800
277	Water Treatment Plant	Hong Kong Resort Co Ltd	Hong Kong, Discovery Bay, Lantau Island	1980	1981	Industrial	2,631,200
278	Carlsberg Brewery	Carlsberg Brewery Hong Kong Ltd	Hong Kong, Tai Po	1979	1981	Industrial	15,180,000
279	B.B.C. Factory	Brown Boveri (HK) Ltd.	Hong Kong, Tai Po	1981	1981	Industrial	3,036,000
280	Palm Oil Refinery	Palm Oil Development Corporation	Nigeria, Udi Nadin	1981	1981	Industrial	18,722,000
281	Model Dairy Farm	Elapco	UAE, Umm Al Quwain	1980	1981	Industrial	5,566,000
282	NCC Plant	Abu Dhabi National Oil Company	UAE, Abu Dhabi, Habshan Bab	1980	1980	Industrial	1,497,760
283	Continental Can Factory	Continental Can (HK) Ltd	Hong Kong, Tai Po	1979	1979	Industrial	1,275,120
284	Clothing Factory	Alawi Enterprises Llc	Oman, Azaiba	1979	1979	Industrial	1,518,000
285	High Island Water Project	Government of Hong Kong.	Hong Kong.	1976	1978	Industrial	1,315,600
286	Control Center	Petroleum Development Oman Llc	Oman, Yibal	1978	1978	Industrial	1,335,840
287	Sublprint Factory.	Sublprint Far East Ltd	Hong Kong, Tuen Mun	1976	1977	Industrial	5,768,400
288	Cement Works	West Africa Portland Cementco	Nigeria, Lagos, Shagamu	1975	1975	Industrial	74,888,000
289	Development of Al Bujiri Quarters	ICCC	KSA, Riyadh	2015	2015	Infrastructure & Utilities	6,267,030
290	EPC Breshnakot	Black & Veatch	Afghanistan, Kandahar	2011	2014	Infrastructure & Utilities	7,360,515
291	Wadi Shallala	Passavant Energy & Environment	Jordan, Amman	2009	2014	Infrastructure & Utilities	953,678
292	Asset Enhancement Scheme	Abu Dhabi Municipality	UAE, Abu Dhabi	2013	2014	Infrastructure & Utilities	22,586,500
293	Abu Dhabi Distribution Projects	Abu Dhabi Distribution Company	UAE, Abu Dhabi	2012	2014	Infrastructure & Utilities	15,250,000
294	MP#21 Perimeter Infrastructure	Advanced Integrated System	UAE, Abu Dhabi	2012	2014	Infrastructure & Utilities	11,000,000
295	LIWA Project	ACC - Posco JV	UAE, Abu Dhabi	2012	2014	Infrastructure & Utilities	7,765,667
296	RLCC Infrastructure Works	Fibrex	UAE, Abu Dhabi	2010	2013	Infrastructure & Utilities	30,547,209
297	Wahat Al Khartoum	Wahat Al Khartoum Urban Development Co.	Sudan, Khartoum	2006	2011	Infrastructure & Utilities	9,358,917

## DSE Completed Projects List - MEP, Infrastructure, Rail

S.No	Project Name	Client	Location	Start Date	Completion Date	Vertical	Project Value (USD)
298	CCPMeydan, Nad Al Sheba	Meydan L.L.C.	UAE, Dubai	2006	2011	Infrastructure & Utilities	53,364,998
299	Sultan Qaboos Grand Mosque	Diwan of the Royal Court	Oman	1995	2001	Leisure	12,144,000
300	Nad Al Sheba Grand Stand Extension	HH Shk Mohamed	UAE, Dubai	1997	2000	Leisure	1,088,800
301	Wafi Shopping Mall Expansion	MKM Services	UAE, Dubai	1996	1999	Leisure	4,355,200
302	Dubai Creek Golf & Yacht Club	Government of Dubai.	UAE, Dubai	1990	1993	Leisure	17,420,800
303	Ruwi Sports Club	Assarain Enterprises	Oman, Ruwi	1990	1990	Leisure	313,720
304	Emirates Golf Club.	Government of Dubai.	UAE, Dubai	1986	1989	Leisure	14,426,600
305	Horse Stable Complex.	Government of Dubai.	UAE, Dubai	1988	1989	Leisure	2,631,200
306	St Mary's Church.	Roman Catholic Church Association.	UAE, Dubai	1988	1989	Leisure	2,024,000
307	Sports & Social Club Extension.	Dubai International Trade Centre.	UAE, Dubai	1987	1987	Leisure	1,922,800
308	Private Health Club	International Electric Company	UAE, Dubai	1986	1986	Leisure	667,920
309	American Club Town Facility	American Club of Hong Kong	Hong Kong	1985	1985	Leisure	1,922,800
310	Extension to Camel Track Grandstand	Government of Dubai	UAE, Dubai	1985	1985	Leisure	1,821,600
311	Camel Racetrack Grandstand.	Government of Dubai.	UAE, Dubai	1978	1981	Leisure	2,449,800
312	C.M.C. Stadium	Central Military Command	UAE, Dubai	1978	1978	Leisure	6,072,000
313	Hong Kong Arts Centre	Hong Kong Arts Centre.	Hong Kong.	1975	1977	Leisure	10,322,400
314	Arabian Ranches & Golf Club House	Emaar	UAE, Dubai	2002	2005	Leisure, Hospitality	2,722,000
315	ITCC 17 Parcels	J&P Rayadah Investment Company	KSA	2011	2015	Mixed Use	129,587,066
316	Raslafan Safety College	Qatar Petroleum	Qatar	2010	2013	Mixed Use	3,042,345
317	The River	Taksin Properties	Thailand	2009	2013	Mixed Use	40,000,000
318	Anantara Palm Jumeirah and Tiara Residence	Zabeel Investments	UAE, Dubai	2006	2012	Mixed Use	80,000,000
319	Royal Amwaj Resort & Spa	Seven Tides Limited	UAE, Dubai	2008	2012	Mixed use	61,100,000
320	Fairmont Palm Hotel & Resort	IFA Hotels & Resorts	UAE, Dubai	2008	2012	Mixed use	53,312,000



## DSE Completed Projects List - MEP, Infrastructure, Rail

S.No	Project Name	Client	Location	Start Date	Completion Date	Vertical	Project Value (USD)
321	Golden Mile Palm Jumeirah	Isthimar/IFA Hotels & Resorts JV	UAE, Dubai	2006	2010	Mixed Use	96,358,800
322	Laguna Hotel & Residential Tower (MEP Package)	IFA Hotels & Resorts	UAE, Dubai	2007	2010	Mixed Use	25,000,000
323	Indigo Towers (Mixed Used Towers) on Plot # D1 at Jumeirah Lake Towers	Jumeirah Properties Investment Ltd.	UAE, Dubai	2005	2008	Mixed Use	11,976,800
324	GOSI Park Office	Al-Latifiah	KSA	2010	2012	Office	11,200,000
325	Majan Development HQ (Office Building)	Majan Development	Oman	2010	2012	Office	1,367,589
326	Seawater Pumping Station (North) 520A.	Airport Authority, Hong Kong	Hong Kong, Chek Lap Kok	1995	1997	Power Stations	17,365,920
327	Seawater Pumping Station (South) 520B	Airport Authority - Hong Kong	Hong Kong, Chek Lap Kok	1995	1997	Power Stations	11,293,920
328	Power & Desalination Project	Saline Water Conversion Company, S.A.	KSA, Shoaiba	1994	1997	Power Stations	20,240,000
329	Taweelah Power Station	Water & Electricity Department, Abu Dhabi Government.	UAE, Abu Dhabi	1992	1993	Power Stations	3,238,400
330	Electrification to Army Camp	Central Military Command	UAE, Dubai	1987	1987	Power Stations	5,262,400
331	Electrification of Nassim Area	R.E.C.O.	KSA	1984	1984	Power Stations	14,168,000
332	Electrification to Al Bustan Hotel	Ministry of Electricity	Oman, Muscat	1984	1984	Power Stations	8,096,000
333	Rusayl Power Station.	Government of the Sultanate of Oman	Oman, Muscat	1983	1984	Power Stations	5,521,472
334	Quriyat Electrification Scheme	Ministry of Electricity	Oman, Quriyat	1984	1984	Power Stations	10,929,600
335	Electrification of Sohar	Ministry of Electricity	Oman, Sohar	1984	1984	Power Stations	2,266,880
336	75MW Power Station	Abu Dhabi Marine Operating Company (Adma-Opco).	UAE, Abu Dhabi, Das Island	1982	1984	Power Stations	20,847,200
337	Urban Development Electrification	Scoco, Riyadh, Kingdom of Saudi Arabia	KSA, Riyadh	1983	1983	Power Stations	3,339,600
338	Nun River Electrification	Ministry of Electricity & Water supply	Nigeria, Rivers State	1983	1983	Power Stations	125,083,200
339	Nun River/Kolo Creek Gas Turbine Project.	Ministry of Electricity & Water Supply.	Nigeria, Rivers State	1983	1983	Power Stations	36,432,000

## DSE Completed Projects List - MEP, Infrastructure, Rail

S.No	Project Name	Client	Location	Start Date	Completion Date	Vertical	Project Value (USD)
340	Castle Peak Power Station	Kowloon Electrical Supply Company	Hong Kong	1980	1982	Power Stations	8,419,840
341	Underground Electrical Infrastructure	Sceco, Riyadh, Kingdom of Saudi Arabia	KSA, Riyadh	1982	1982	Power Stations	9,310,400
342	Taikoo Shing Seawater Pumping station.	Quarry Bay Development Ltd (Swire Group)	Hong Kong, Quarry Bay	1980	1981	Power Stations	6,325,000
343	Ras-Al Khaimah Water Tank	Ministry of Water & Electricity.	UAE, Ras-Al Khaimah	1981	1981	Power Stations	637,560
344	Rural & Municipal HT Electrification	Sceco, Riyadh, Kingdom of Saudi Arabia	KSA, Riyadh	1979	1979	Power Stations	5,566,000
345	Sub Stations for Petroleum Plants	A.R.A.M.C.O.	KSA, Safaniya & Ras-Tanura	1979	1979	Power Stations	9,614,000
346	Rashidiya Water Tank	Dubai Municipality	UAE, Dubai	1979	1979	Power Stations	1,376,320
347	Texport Terminal	Texport Terminal (HK) Ltd / Unilever	Hong Kong, Kwai Chung	1978	1978	Power Stations	404,800
348	Shatin South Pumping Station (P.W.D.)	Jebson & Co	Hong Kong, Shatin	1978	1978	Power Stations	374,440
349	Utilities & Cathodic Protection	A.R.A.M.C.O.	KSA, Dhahran, Abqaiq & Ras-Tanura	1975	1975	Power Stations	19,228,000
350	Al Ain Diesel Power Station.	Abu Dhabi Government.	UAE, Al Ain	1970	1971	Power Stations	6,173,200
351	Gas Turbine Power Station	Water & Electricity Department of Abu Dhabi.	UAE, Abu Dhabi	1968	1970	Power Stations	39,468,000
352	Al Ain Asset Enhancement Scheme	Abu Dhabi Sewerage Contractors	UAE, Al Ain	2010	2012	Pumping Station	20,233,413
353	1 MW PV Solar Plant	Gemini Geoss Energy PCT Ltd	India, Tamil Nadu	2011	2014	Renewable Energy (Solar)	3,443,928
354	Private Residence Villa	Arabtec	UAE, Abu Dhabi	2015	2016	Residential	272,480
355	Palace Staff Clinic- Al-Shattie	International Contractors Co. (ICC)	Oman, Salalah	2012	2014	Residential	7,000,000
356	Private Residence Project	Private Office	Qatar, Doha	2013	2014	Residential	8,206,848
357	Mangrove Place	Luxury Real Estate Development	UAE, Abu Dhabi	2009	2014	Residential	20,923,000
358	Cayan (Infinity) Tower, Dubai Marina	Cayan Investments & Development	UAE, Dubai	2008	2013	Residential	38,352,000
359	Al Raha Beach Development Al Muneera	Aldar	UAE, Abu Dhabi	2009	2012	Residential	141,400,000

## DSE Completed Projects List - MEP, Infrastructure, Rail

S.No	Project Name	Client	Location	Start Date	Completion Date	Vertical	Project Value (USD)
360	Saadiyat Beach Apartments	Tourism Development and Investment Company (TDIC)	UAE, Abu Dhabi	2010	2012	Residential	37,700,000
361	Labour Accomodation in al Dhafra	CAMPCO	UAE, Abu Dhabi	2010	2012	Residential	8,030,000
362	Ocean Heights Tower	Damac Gulf Properties LLC	UAE, Dubai	2007	2012	Residential	35,360,000
363	Al Hitmi Residential Building	Ali Bin Khalifa asl Hitmi & Co	Qatar, Doha	2007	2011	Residential	12,602,740
364	Nasser Tower	Artaal Real Estate Co.	Kuwait	2006	2010	Residential	898,256
365	Fairmont Palm Residences	IFAHotels & Resorts	UAE, Dubai	2006	2010	Residential	46,274,000
366	Hatta G+2 Staff Accommodation	Dubai Real Estate Corporation	UAE, Dubai	2009	2010	Residential	11,432,400
367	Concorde Tower (3B+G+46) on Plot # H2 at Jumeirah Lake Tower	32 Group	UAE, Dubai	2006	2008	Residential	13,700,000
368	Shk. Hasher Villa	SHK. Hasher	UAE, Dubai	2000	2006	Residential	1,088,800
369	Mirdif Uptown Development	Properties Investment L.L.C	UAE, Dubai	2003	2005	Residential	2,340,920
370	The Green Community Phase IA	Properties Investment L.L.C	UAE, Dubai	2002	2004	Residential	5,444,000
371	Al Marai Staff Accomodation 2	Al Marai	KSA, Al Kharj	2001	2002	Residential	3,200,000
372	Intercontinantal Furnished Villa	Riyadh Development	KSA	2000	2001	Residential	1,173,040
373	Sunset Beach Package TP-08	Ridco	KSA	1999	2000	Residential	146,950
374	Al Marai Staff Accomodation 1	Al Marai Company	KSA, Al Kharj	1998	1999	Residential	1,269,421
375	Issa Villa	Sheihk Mohd. Ibrahim Al Issa	KSA, Riyadh	2005	2007	Residential	1,099,725
376	Ghanim Residential & Commercial Building	Abdul Rahman Saeed Ghanim.	UAE, Dubai	1995	1996	Residential	9,512,800
377	ADCO Residential Complex.	Abu Dhabi Company for Operations.	UAE, Abu Dhabi	1994	1995	Residential	12,144,000
378	Wafi Residential Complex	MKM Services	UAE, Dubai	1993	1995	Residential	16,596,800



## DSE Completed Projects List - MEP, Infrastructure, Rail

S.No	Project Name	Client	Location	Start Date	Completion Date	Vertical	Project Value(USD)
379	Dubai Drydock Accommodation Phases 2 - 5	Dubai Drydock Company.	UAE, Dubai	1989	1992	Residential	18,722,000
380	Private Villa.	Assarain Enterprises Llc.	Oman	1991	1991	Residential	151,800
381	Family Villa Complex.	AlTaya Family	UAE, Dubai	1990	1991	Residential	2,914,560
382	4 - New Villas	Assarain Enterprises.	Oman, Shattie Al Qurm	1990	1990	Residential	506,000
383	Villas for Royal Guard	Government of Dubai.	UAE, Dubai	1990	1990	Residential	3,845,600
384	34 Villa's	Government of Dubai.	UAE, Dubai	1990	1990	Residential	2,226,400
385	New Villa	Private Client	UAE, Dubai	1990	1990	Residential	1,740,640
386	Villa for Salim Bin Said al Wahaibi.	Lt. Col. Said Salem AlWahaibi.	Oman	1989	1989	Residential	1,335,840
387	ROP Accommodation at Sultan Qaboos University.	Sultan Qaboos University	Oman, Seeb	1989	1989	Residential	526,240
388	New Villa	Private Client	UAE, Dubai	1987	1987	Residential	2,631,200
389	National Methanol Housing Project	National Methanol Company	KSA	1986	1986	Residential	3,036,000
390	Officers Mess Complex	Royal Guard Brigade	Oman	1986	1986	Residential	6,072,000
391	Guest House at Faud Gardens	Assarain Enterprises	Oman	1986	1986	Residential	242,880
392	New Villa	Assarain Enterprises	Oman, Hajir	1986	1986	Residential	323,840
393	Villa in Sharjah.	Private Client	UAE, Sharjah	1986	1986	Residential	1,619,200
394	Villa for H.H. Talal Rumais.	Diwan of Government of Oman	Oman	1985	1985	Residential	2,165,680
395	3 - New Villa's	Assarain Enterprises	Oman, Quriyat	1985	1985	Residential	1,366,200
396	Community Utilities Extension	ARAMCO	KSA, Dhahran	1984	1984	Residential	40,480,000
397	Hatat House	Assarain Enterprises	Oman	1984	1984	Residential	12,670,240
398	Al Hisn Palace Complex	Diwan of the Government of Oman	Oman	1984	1984	Residential	9,108,000
399	New Villa for H.H. Sayyid Faisal Bin Ali.	Diwan of Government of Oman	Oman	1984	1984	Residential	3,036,000
400	New Villa for Saif Salem	Lt. Col. Said Salem AlWahaibi.	Oman	1984	1984	Residential	232,760

## DSE Completed Projects List - MEP, Infrastructure, Rail

S.No	Project Name	Client	Location	Start Date	Completion Date	Vertical	Project Value (USD)
401	2 - New Villas	Diwan of Government of Oman	Oman, Hajir	1984	1984	Residential	2,428,800
402	2- New Villa's	Diwan of Government of Oman	Oman, Salalah	1984	1984	Residential	2,277,000
403	Condominium Blocks	Government of Singapore	Singapore	1984	1984	Residential	20,240,000
404	Royal Palace	Member of the Royal Family	UAE, Al Ain	1984	1984	Residential	16,596,800
405	Majlis at Beach Palace Complex.	Government of Dubai	UAE, Dubai	1984	1984	Residential	1,651,584
406	New Villa	Lt. Col. Said Salem Al Wahaibi.	Oman, Al Hajar	1983	1983	Residential	384,560
407	Al-Khoud Township	Ministry of Social Affairs & Labour	Oman, Al-Khoud	1982	1982	Residential	17,710,000
408	Permanent Construction Camp Accommodation.	Contracting & Maintenance Company	UAE, Abu Dhabi, Thammama	1982	1982	Residential	6,578,000
409	New Villa	Mr Hassan Said	Oman	1980	1980	Residential	445,280
410	Mens Majlis	Government of Dubai	UAE, Dubai, Nakhali	1980	1980	Residential	2,226,400
411	Residential Block	Wah Yuen Chuen Co - Operative Bldg. Soc. Ltd.	Hong Kong	1979	1979	Residential	3,036,000
412	Staff Quarters	Hong Kong & Shanghai Banking Corporation.	Hong Kong, Central	1979	1979	Residential	2,327,600
413	New Palace	Government of Dubai	UAE, Dubai	1979	1979	Residential	6,982,800
414	Wo Che Estate, phase 1B Area 8.	Hong Kong Housing Authority.	Hong Kong, Shatin	1978	1978	Residential	2,530,000
415	Construction Workers Camp	Petroleum Developments Oman Ltd	Oman, Yibal	1978	1978	Residential	2,631,200
416	Sahara Mall Expansion Phase 1A (MEP)	Al Nahda Real Estate	UAE, Sharjah	2008	2015	Retail	22,600,000
417	Abyat Mega Store	ABYAT	Kuwait	2007	2008	Retail	3,259,800
418	Tabuk Shopping Mall	Tabuki	KSA	1999	2000	Retail	7,731,400
419	Al Fajer Department Store	Al Fajer Group of Companies.	UAE, Dubai	1997	1997	Retail	2,074,600
420	Wafi Commercial Complex	MKM Services	UAE, Dubai	1992	1995	Retail	17,965,200
421	Spinneys Retail Outlet	Spinneys Supermarkets Ltd	UAE, Dubai	1995	1995	Retail	2,327,600
422	The Promenade Complex	Hong Kong Land Co Ltd	Singapore	1983	1985	Retail	18,013,600

## DSE Completed Projects List - MEP, Infrastructure, Rail

S.No	Project Name	Client	Location	Start Date	Completion Date	Vertical	Project Value(USD)
423	Harbour City (Phase IV)	Hong Kong & Kowloon Wharf & Godown Co Ltd.	Hong Kong, Kowloon Bay	1982	1984	Retail	188,232,000
424	DIFC Spine Tunnel	Empower	UAE, Dubai	2007	2008	Reticulation Network	3,815,519
425	Al Quoz Jisa	Empower	UAE, Dubai	2007	2007	Reticulation Network	8,468,840
426	Environmental Design Study	Mass Transit Railway Corporation	Hong Kong	1975	1975	Transport	8,096,000
427	Hung Hom Railway Terminus	Government of Hong Kong	Hong Kong	1974	1975	Transport	4,455,000
428	WWTP Ford	Ford India Private Limited	India	2013	2015	Waste Water Treatment Plant	6,373,902
429	WTP&WWTP 1ST MEPPF CMI, FORDPLANT	Ford India Private Limited	India	2014	2015	Waste Water Treatment Plant	218,911
430	STEP Bouira, WWTP Algeria	Passavant Roediger GmbH	Algeria	2010	2012	Waste Water Treatment Plant	569,839
431	Reem Mall	Al Farwaniya Property Development LLC	Abu Dhabi, UAE	2018	2022	Commercial	154,076,086
432	Konouz Mall	Sabri Taha Al Ali	Kuwait	2015	2020	Commercial	11,083,443
433	Oman Convention Center Expansion	Oman Shapoorji Contracting	Oman, Muscat	2015	2018	Commercial	39,005,255
434	Oman Convention Center AV System	Oman Shapoorji Contracting	Oman, Muscat	2015	2018	Commercial	11,980,325
435	Theme Park	Warner Brothers (WB)	Abu Dhabi, UAE	2015	2019	Commercial	68,954,652
436	Dubai Sports City	EMICOOL	Abu Dhabi, UAE	2015	2018	Commercial	33,634,679
437	Jumeirah Open Beach	Al Futtaim Carillion	UAE, Dubai	2015	2017	Commercial	19,565,395
438	Wafi Mall Hotel Complex and Mall Expansion	MKM Commercial Holding	UAE, Dubai	2015	2019	Commercial	61,800,338
439	Saraya Aqaba	Saraya Aqaba Real Estate Dev/JV (DSC/CCC/ART)	Jordan, Aqaba	2014	Ongoing	Commercial	38,170,373
440	Royal Opera House - Theatre & Music Library	Oman Shapoorji / Douglas OHI	Oman, Muscat	2014	2017	Commercial	19,936,278
441	Email Admin Offices and Facilities	Ali & Sons Contracting	Abu Dhabi, UAE	2014	2020	Commercial	22,930,228

## DSE Completed Projects List - MEP, Infrastructure, Rail

S.No	Project Name	Client	Location	Start Date	Completion Date	Vertical	Project Value(USD)
442	Jadaf District Cooling Plant	MKM Commercial Holding	UAE, Dubai	2015	2019	Commercial	3,626,997
443	Fountain View	ACC	UAE, Dubai	2014	2019	Commercial	78,000,000
444	ITCC Auxillary Works	Rayadah Investment Company	KSA, Riyadh	2013	2017	Commercial	38,142,269
445	The Mall of Qatar	Urbacon Construction Company	Qatar, Doha	2013	2019	Commercial	142,242,488
446	Musheireb-Phase 1C (Dohaland)	Brookfield Multiplex	Qatar, Doha	2013	2018	Commercial	97,100,000
447	Louvre Museum	AsoLouvre JV	Abu Dhabi, UAE	2013	2015	Commercial	6,373,902
448	RLCC O&M - Khalifa City	Al Forsan District Cooling Company	Abu Dhabi, UAE	2014	2015	District Cooling	885,558
449	Wafi Mall Complex and Mall Expansion District Cooling Plant	Wafi Mall Hotel Complex and Mall Expansion	UAE, Dubai	2015	2019	District Cooling	4,904,632
450	Saraya Aqaba DCP	Saraya Aqaba Real Estate Dev/JV (DSC/CCC/ART)	Jordan, Aqaba	2014	Ongoing	District Cooling	19,456,509
451	Wadi Modular District Cooling Plant	Mafareq Qatar	Qatar, Doha	2014	2018	District Cooling	11,083,443
452	Musheireb Heart of Doha	DOHALAND (Musheireb)	Qatar, Doha	2010	2014	District Cooling	62,241,362
453	Ruwais Housing Complex Expansion Phase - IV (DS399)	ADNOC	Abu Dhabi, UAE	2014	2020	District Cooling	45,125,367
454	College of Business and College for Women, Sabah Al Salem University City	Kuwait University Construction Program	Kuwait	2012	2018	Education	19,538,163
455	College of Arts, Sabah Al Salem University City	Kuwait University Construction Program	Kuwait	2011	2020	Education	50,010,359
456	King Fahad Medical City	Al Latifah-Habtoor Leighton (JVDSI & HLS)	KSA	2013	2020	Hospital	69,526,394
457	Maliha Hospital	DSCSISK JV	UAE, Sharjah	2013	2018	Hospital	19,500,000
458	Dammam University Hospital	Dammam University	KSA	2011	2015	Hospital	59,727,372
459	Tiara Hotel	Arabtec	UAE, Dubai	2015	2020	Hospitality	7,901,907
460	W Hotel	Al Futtaim Carillion	UAE, Dubai	2015	2019	Hospitality	89,547,819



## DSE Completed Projects List - MEP, Infrastructure, Rail

S.No	Project Name	Client	Location	Start Date	Completion Date	Vertical	Project Value (USD)
461	Plaza View	Al Fara'a General Contracting	UAE, Abu Dhabi	2014	2022	Hospitality	35,980,366
462	Al Maabar Mixed use Development	Al Maabar Abdoun	Jordan, Amman	2013	2019	Hospitality	67,141,427
463	St. Regis Nile Corniche	Qatari Diar Real Estate Investment Company (CCC)	Egypt	2010	2020	Hospitality	113,351,457
464	Motor City O&M	EMICOOL	UAE, Dubai	2015	2018	Infrastructure & Utilities	1,588,516
465	STEP Abu Dhabi Pumping Station	ADSSC	UAE, Abu Dhabi	2012	2019	Infrastructure & Utilities	121,118,562
466	Al Meena Residential and Commercial Tower	Foundation Property Management	UAE, Abu Dhabi	2015	2018	Mixed Use	27,356,948
467	New Cuffe Parade 4 Towers Wadala	Lodha Crown	India, Mumbai	2013	2017	Mixed Use	14,428,647
468	Emiral Complex	Emiral	Algeria, Algiers	2012	Ongoing	Mixed Use	51,600,344
469	Jabal Al Omar	ACC + DSC KSA (JV)	KSA	2012	Ongoing	Mixed Use	101,370,000
470	Lodha World Crest Tower, Mumbai	Shreeniwas Cotton Mills Ltd (Lodha Developers)	India, Mumbai	2012	2017	Mixed Use	2,089,317
471	SUPPLY OF 220KV PS-1 & PS-3 GETCO	VOLT-INFRA PRIVATE LIMITED	India	2014	2017	Power	4,207,129
472	ESTABLISHMENT OF 8 NOS. 33 KV/11 ELECTRIC SUBSTATION AND CABLING WORKS	DEE-TECH PROJECTS PRIVATE LIMITED	India	2014	2017	Power	9,963,732
473	Monnet Thermal Power 2 x 525 MW Project	Monnet Power Company Limited	India	2012	2015	Power	20,374,550
474	Al Hadeel Residential Development	Al Hadeel	UAE, Abu Dhabi	2015	2017	Residential	15,619,680
475	Al Rayyan Palace	Private Engineering Office	Qatar, Doha	2013	2016	Residential	34,932,776
476	Sheikh Saad Al Abdullah Al Sabah Indoor Sports Hall Complex	Public Authority for Youth and Sports (PAYS)	Kuwait	2011	2018	Sports & Leisure	19,658,486

## DSE Completed Projects List - MEP, Infrastructure, Rail

S.No	Project Name	Client	Location	Start Date	Completion Date	Project Values (USD)
477	Doha Metro Depot and Stabilising Yards	Qatar Railways Company	Qatar, Doha	2016	2018	93,400,000
478	Hung Horn (Kowloon and Canton) Railway Terminus	Government of Hong Kong	China, Hong Kong	1974	1975	4,500,000
479	Tunnel Ventilation Design Study	Hong Kong Mass Transit Railway	China, Hong Kong	1977	1978	1,000,000
480	MRTC Headquarters	Hong Kong Mass Transit Railway	China, Hong Kong	1978	1980	6,500,000
481	Tsuen Muen Light Rail System	Government of Hong Kong	China, Hong Kong	1987	1989	10,000,000
482	North Pole Depot	British Rail	UK, London	1990	1992	17,500,000
483	Jubilee Line Extension Project	London Underground LTD	UK, London	1993	2000	416,000,000
484	Brixton Congestion Relief	Metronet BCV	UK, London	2001	2003	4,000,000
485	Siemens Traincare Facility	Siemens Transportation Systems	UK, Southampton	2002	2003	6,400,000
486	Bedford Depot	Fitzpatrick Contractors LTD	UK, Bedford	2004	2004	3,500,000
487	St Pancras Station Redevelopment	Union Railways North	UK, London	2001	2006	245,000,000
488	Channel Tunnel Rail Link Line Infrastructure	Union Railways North	UK, Kent	2002	2006	350,000,000
489	Stratford & Ebbsfleet International Stations	Rail Link Engineering	UK, Kent	2004	2006	24,000,000
490	MEP works for high speed Hitachi train Ashford and Ramsgate Depots.	Network Rail	UK, London	2006	2008	16,000,000
491	MEP works for London Underground	London Underground LTD	UK, London	2000	2010	81,000,000
492	Dubai Airport Passenger Mover	Dubai Airport	UAE, Dubai	2014	2015	10,000,000

# DSE Complete Projects List - Civil

S.No	Project Name	Client	Location	Scope	Start Date	Completion Date	Vertical	Project Values (USD)
1	The Binary Tower	Ominyat/ The Binary Development	UAE, Dubai	Civil & MEP	2012	2016	Commercial	51,158,729
2	Damac Project V.O.	Damac Real Estate	KSA	Civil	2014	2016	Commercial	39,600,000
3	Jabal Al Omar Cost Centre	Jabal Omar Development Co.	KSA, Mecca	Turnkey	2013	2014	Commercial	3,000,000
4	IT & Communication Complex Project	Riyadh Investment Co.	KSA, Riyadh	Turnkey	2011	2014	Commercial	14,665,203
5	Jumeirah Park Corner	Gulf Technical Construction Company LLC	UAE, Dubai	Turnkey	2008	2013	Commercial	6,553,644
6	The Mangrove Place Development Shams Abu Dhabi, Al Reem Island	Luxury Real Estate Development	UAE, Abu Dhabi	Civil	2009	2012	Commercial	98,039,100
7	Mock-up showrooms and apartment	Seven Tides Limited	UAE, Dubai	Architectural Package	2006	2007	Commercial	1,224,900
8	Warehouse Fit & Construction, Design & Build	Seven Tides Limited	UAE, Dubai	Hotel Fit out	2006	2006	Commercial	762,160
9	Sales & Marketing Center	IFA Hotels & Resorts	UAE, Dubai	Steel Structure & Architectural Package	2006	2006	Commercial	1,088,800
10	King Abdul Azez University	King Abdul Azez University	KSA	Civil	2009	2012	Education	3,800,000
11	Residential Leisure & Commercial Compound Infrastructure Works Khalifa City District Cooling Plant - Abu Dhabi	Private Property Management	UAE, Abu Dhabi	Turnkey	2010	2014	Infrastructure & Utilities	5,438,556
12	Motor City District Cooling Plant, Phase 1&2	Emicool	UAE, Dubai	District Cooling Plant	2007	2012	Infrastructure & Utilities	30,918,235
13	Nad Al Sheba District Cooling	Meydan	UAE, Dubai	Heavy Civils	2008	2010	Infrastructure & Utilities	13,249,753

## DSE Completed Projects List - Civil

S.No	Project Name	Client	Location	Scope	Start Date	Completion Date	Vertical	Project Values (USD)
14	Al Qouz JISA District Cooling Distribution Pipe Network	EMPOWER	UAE, Dubai	Infrastructure & Utilities	2007	2007	Infrastructure & Utilities	2,927,129
15	Dubai Festival City Plant Room and Trenching Works	Dubai Festival City	UAE, Dubai	District Cooling Plant	2005	2007	Infrastructure & Utilities	10,343,600
16	Jumeirah Beach Residence District Cooling Plant	TECOM	UAE, Dubai	Concrete Structure with Architectural Package	2004	2007	Infrastructure & Utilities	3,810,000
17	DP World	Dubai Ports Authority	UAE, Dubai	Civil	2012	2015	Mixed Use	19,754,768
18	Al Jawhara Tower	Damac	KSA, Jeddah	Civil	2010	2013	Mixed Use	48,152,700
19	The Corner - Business Bay	DAMAC Star Properties LLC	UAE, Dubai	Turnkey	2010	2013	Mixed Use	15,000,000
20	Park Central	DAMAC Star Properties LLC	UAE, Dubai	Turnkey	2005	2013	Mixed Use	8,500,000
21	Lakeside Towers	DAMAC/ The Waves FZ LLC	UAE, Dubai	Turnkey	2010	2012	Mixed Use	102,004,673
22	KPM Tower	Marina Exclusive LLC	UAE, Dubai	Civil	2009	2012	Mixed Use	8,513,797
23	The Royal Amwaj Resorts & Spa	Seven Tides Limited/Asteco Development Management LLC	UAE, Dubai	Civil	2008	2012	Mixed Use	112,669,579
24	Laguna Tower Hotel & Residential	IFA Hotels	UAE, Dubai	Civil	2006	2012	Mixed Use	51,873,400
25	Green Community, Family Villas and Townhouses	Union Properties	UAE, Dubai	Structural Works and Architectural Package	2006	2010	Mixed Use	68,000,000
26	International City - Package 13	Nakheel	UAE, Dubai	Turnkey	2005	2007	Mixed Use	82,680,750
27	Cayan Business Center	CAYAN	UAE, Dubai	Core & Shell	2006	2008	Offices	15,923,700
28	DAFZA- Expansion Projects – Phase IV	Dubai Airport Freezone Authority	UAE, Dubai	Enhancement of Chiller Capacity, Domestic & Fire Water Pump & Tank Facility & MEP Services	2004	2004	Offices	336,362
29	Emiral 400 Units	Emiral	Algeria	Civil	2014	2016	Residential	5,236,372
30	Labour Accommodation Hameem - Al Dhafra	Campco Properties	UAE, Abu Dhabi	Civil	2010	2014	Residential	39,664,775



## DSE Completed Projects List - Civil

S.No	Project Name	Client	Location	Scope	Start Date	Completion Date	Vertical	Project Values (USD)
31	AmberResidence	DAMAC Development LLC	KSA, Jeddah	Civil	2010	2014	Residential	6,855,867
32	(G+1) Villa on Plot No. 39-310, Emirates Hills Dubai	Mr. Jasim Al Bahar	KSA, Riyadh	Civil	2006	2014	Residential	2,915,195
33	G+2 Hatta Staff Accommodation	Dubai Government Real Estate	UAE	Civil	2008	2012	Residential	41,661,249
34	Hatta Staff Accommodatio	Dubai Real Estate	UAE	Turnkey	2008	2010	Residential	35,640,025
35	(G+1) NewLuxury Villa, Emirates Hills	Mr. Mohammad Ezat	UAE	Turnkey	2006	2010	Residential	1,224,900
36	Labor Camp Al Sajjah	Drake & Scull International	UAE	Turnkey	2007	2008	Residential	5,046,258
37	G+1 12 Villas	Mr. Mohammad Rashed Ghadhayer	UAE	Turnkey	2005	2008	Residential	3,318,880
38	(G+1) 8-Villas on Plot# 373-231, Al Barsha 1st Dubai	Firas Aziz Haider Darwish	UAE, Dubai	Civil	2005	2007	Residential	1,796,520
39	G+1) 6 Villas on Plot # 332-342, Jumeirah 1st Dubai	Firas Aziz Haider Darwish	UAE, Dubai	Civil	2005	2006	Residential	2,150,380
40	Movenpick Hotel & Oceana Residences	Seven Tides	UAE, Dubai	Architectural package & Wet Works	2006	2011	Residential	20,000,000
41	Lamar Towers	Lamar Company	KSA, Jeddah	Civil	2015	2017	Commercial	184,000,000
42	AlRajhi Data and Cash Centre	AlRajhi Bank	KSA, Riyadh	Civil	2013	2016	Commercial	76,430,000
43	ITCC Auxiliary Works	Rayadah Investment Company	KSA, Riyadh	Civil	2013	2015	Commercial	19,500,000
44	Prince Salman Science Oasis	Arriyadh Development Authority	KSA, Riyadh	Civil	2010	2014	Education	45,720,000
45	KAUST Perimeter Security System	KingAbdullah University of Science and Technology	KSA, Riyadh	Civil	2013	2016	Education	111,500,000

## DSE Completed Projects List - Civil

S.No	Project Name	Client	Location	Start Date	Completion Date	Vertical	Project Values (USD)
46	District Cooling Facilities in Hadeed	Drake & Scull International	Jubail	2008	2009	Civil Works	325,173
47	NGL Process Plant Berry Gas (GAMA)	Gama Al Moushegah Arabia Ltd.	Jubail	2003	2003	Civil Works	101,738
48	Helicopter Landing Facilities-Phase 1	Ministry of Defense & Aviation	Jeddah	1993	1994	Civil Works	5,472,873
49	Ship Repair Facility Extension Phase I	Ministry of Defense & Aviation	Jeddah	1990	1991	Civil Works	4,043,200
50	Water Rese Residential Palace / VIP for Ministry of Agriculture	Ministry of Agriculture Saudi Arabia	Riyadh	1985	1985	Civil Works	731,530
51	Damac Project V.O.	Damac	KSA, Riyadh	2014	2016	Commercial	26,400,000
52	Dhahran Techno Valley	King Fahad University of Petroleum	Dhahran	2010	2014	Commercial	31,735,400
53	Al Bustan - II Compound	Olayan Real Estate Company	Riyadh	2010	2012	Commercial	3,199,200
54	Development of Al Bujiri Quarters	Arriyadh Development Authority	Riyadh	2009	2012	Commercial	37,064,300
55	Bin Khaldoon Plaza - Dammam Phase II	Olayan Real Estate Co.	Dammam	2001	2002	Commercial	6,338,257
56	Bin Khaldoon Plaza - Dammam Phase I	Olayan Real Estate Co.	Dammam	2000	2002	Commercial	8,777,720
57	Gulf Real Estate	Gulf Real Estate Company	Riyadh	2008	2010	Commercial Building	15,380,356
58	Commissary Building Munirah Camp Reconfiguration	Saudi Arabian Oil Company	Munirah	2004	2006	Commercial Building	5,413,533
59	Redevelopment & Expansion to Dareen Shopping Center - Riyadh	Olayan Real Estate Company	Riyadh	2005	2007	Commercial Center / Market	3,963,400
60	Attallah Residential & Commercial Complex	Saudi Brothers Commercial Co.	Jeddah	2004	2006	Commercial Center / Market	3,192,000
61	H.R.H. Prince Bandar Bin Sultan Bin Abdul Aziz Aire Crew Staff Accommodation	Saudi Consulting Se Residential Palace	Riyadh	2005	2006	Commercial Center / Market	657,743
62	Bin Khaldoon Plaza - Phase II, Zone No. 4, Dammam	Olayan Real Estate Co.	Dammam	2002	2003	Commercial Center / Market	6,338,257
63	Jeddah Equestrian Club	Bouyges Mr. Victor Dos Santos	Jeddah	1999	2003	Commercial Center / Market	14,630,000
64	Al -Awaly Tower (Al Zahem Hotel)	Al Zahem Co. Madinah Munawarah	Madinah	2002	2003	Commercial Center / Market	6,304,200

## DSE Completed Projects List - Civil

S.No	Project Name	Client	Location	Start Date	Completion Date	Vertical	Project Values (USD)
65	Olayan Khurais Center - Jarir Bookstore	Olayan Real Estate Company	Riyadh	2007	2008	Commercial Office	5,156,559
66	Fahd Athel Palace (Structural works)	Saudi FAL Company Limited	Riyadh	2005	2008	Commercial Office	10,557,740
67	ARRIYADH DEVELOPMENT AUTHORITY	ARRIYADH DEVELOPMENT AUTHORITY	Riyadh	2008	2008	Commercial Office	474,444
68	Charity (Dome) Building	Al Qussie International	Riyadh	2005	2007	Commercial Office	6,357,400
69	Buildings for Ministry of Interior	Ministry of Interior Jeddah	Jeddah	2003	2006	Commercial Office	7,793,821
70	BGP Administration Building Berri	Saudi Arabian Oil Company	Al Jubail	2003	2005	Commercial Office	5,538,478
71	Arabian Cement Co, Headquarter Building	Arabian Cement Co. Ltd.	Jeddah	2004	2005	Commercial Office	5,080,600
72	New A/C Warehouse, Utmaniyah Store Yard	Saudi Arabian Oil Company	Uthmaniyah	2004	2005	Commercial Office	1,213,862
73	Renovation of Honda Showroom	Eng. Waheeb O. Khattab Abdulla Hashim Ind. Gases & Eq. Co.	Riyadh	2003	2004	Commercial Office	623,417
74	Olayan Real Estate Complex	Olayan Real Estate Co.	Riyadh	1998	2001	Commercial Office	10,613,400
75	Spimaco & Inara Plaza	Inara Co. Ltd. & Spimac Co. Ltd.	Riyadh	1998	2001	Commercial Office	16,046,538
76	Facility Expansion project Al -Salim Aircraft Co. Ltd.	Al -Salim Aircraft Co. Ltd.	Riyadh	2000	2001	Commercial Office	2,022,897
77	Al Salam Aircraft Co. Ltd.	Al-Salam Aircraft Co. Ltd.	Riyadh	2000	2001	Commercial Office	2,022,897
78	Astra Agricultural Co. Ltd.	Astra Agricultural Co. Ltd.	Riyadh	2000	2000	Commercial Office	262,933
79	Al Mizan Tower	Najmat Al Brooj Est.	Riyadh	1997	2000	Commercial Office	14,577,561
80	Arab Urban Development Institute	Arab Urban Development Institute	Riyadh	1996	1998	Commercial Office	2,922,034
81	Tamlik Tower Office Building	Tamlik Ltd.	Jeddah	1995	1997	Commercial Office	12,704,692
82	Dyrup Paint Factory Administration Building	Dyrup Paint Factory	Riyadh	1993	1995	Commercial Office	2,713,200
83	Hji Hussein Alireza Co., Ltd. New Car Showroom	Haji Hussein Ali Reza Co.	Jeddah	1992	1994	Commercial Office	5,133,800
84	Al-Jazirah Headquarters	Al-Jazirah Corporation	Riyadh	1992	1994	Commercial Office	14,334,889
85	Enany Group of companies general Headquarters	Enany Group	Jeddah	1991	1993	Commercial Office	5,833,903

## DSE Completed Projects List - Civil

S.No	Project Name	Client	Location	Start Date	Completion Date	Vertical	Project Values (USD)
86	Jareer Bookstore H.Q Building	Jareer Bookstore	Riyadh	1991	1992	Commercial Office	1,795,500
87	Building for HRH Mohd. Al Faisal	HRH Mohd. Al Faisal	Makkah	1989	1991	Commercial Office	1,715,700
88	Department of Mineral Resources Office Building	Department of Mineral Resources	Jeddah	1981	1982	Commercial Office	372,400
89	SAMA Building	SAMA	Riyadh	1979	1980	Commercial Office	2,660,000
90	Princess Noura Bint Abdulrahman University for Women (PNU)	Saudi Oger Limited,	Riyadh	2009	2010	Education	23,801,813
91	Algerian Embassy	ALGERIAN EMBASSY	Riyadh	2009	2012	Government	5,300,000
92	King Fahd Military Hospital - Extension	"Zuhair Fayeze Partnership	Jeddah	1998	2002	Hospital & Health Center	21,546,000
93	Disabled Children's Rehabilitation Center	"Ministry of Health	Jeddah	1996	1998	Hospital & Health Center	19,989,484
94	Omm Al Qora Makarem Hotel Makkah	Amias (Alissa) Real Estate	Makkah	2006	2009	Hospitality	22,078,000
95	Upstream Professional Development Center	Saudi ARAMCO	Dahran	2008	2012	Industrial	2,666,000
96	"Khursaniyah Gas Plant/ Process Facilities Khursaniyah Civil Construction Works	Consolidated Contractors Co. W.L.L (Aramco project)	Jubail,	2005	2007	Industrial	8,496,176
97	Construction of Forklift Re-Charging Facility, Dhahran Storehouse	Saudi Arabian Oil Company	Dhahran	2004	2006	Industrial	358,327
98	Saudi Chevron Petrochemical Contract No. SCP-209	Saudi Chevron Petrochemical Co.	Jubail	1999	1999	Industrial	399,000
99	Karan Utilities and Co-Generation, Khursaniyah Gas Plant,	Saudi Aramco	Khursaniyah	2009	2011	Industrial	10,640,000
100	Saudi Arabian Oil Company (SAUDI ARAMCO) SFC # 400572/041	Saudi Arabian Oil Company	Dhahran	1999	1999	Industrial	39,900
101	Water Injection Pump Stations (WIPS) Facilities	SNC - Lavalin / Saipem JV	Aindar & Hawiyah	2008	2009	Industrial Building	35,375,525
102	Saudi Aramco Khursaniyah Permanent Communications	Sumitomo Corporation	Khursaniyah	2005	2009	Industrial Building	10,329,596



## DSE Completed Projects List - Civil

S.No	Project Name	Client	Location	Start Date	Completion Date	Vertical	Project Values (USD)
103	Yanbu Shuaiba Paper Products Factory.	YANBU PAPER FACTORY	Yanbu	2005	2005	Industrial Building	5,054,000
104	SADACA Group - Jeddah Waste Recycling Plant	SCADA Ope. & Main. Group Co.	Jeddah	2001	2003	Industrial Building	3,312,814
105	Abdullah Hashim Industrial Gas Plant	Abdulla Hashim Company	Riyadh	2002	2003	Industrial Building	561,008
106	Sea Water Desalination Plant Obhur	Saudi Bros Comm. Co.	Jeddah	2000	2002	Industrial Building	3,644,200
107	Phase 1 - F15 Hangar	Al-Salam Aircraft Co. Ltd.	Riyadh	2000	2001	Industrial Building	5,321,527
108	SCECO	SCECO H.Q.	Dhahran	1999	2000	Industrial Building	399,000
109	Yanbu Cement Company - Plant & Quarry Workshop Facilities	Yanbu Cement Company	Yanbu	1998	1998	Industrial Building	1,303,400
110	Dyrup Paint Factory	Dyrup	Riyadh	1993	1994	Industrial Building	6,916,000
111	Makkah Water Factory	Safa Weter Factory	Jeddah	1988	1988	Industrial Building	1,330,000
112	Al Babtain Biscuit Factory in Riyadh for Saudi Building Systems	Al Babtain	Riyadh	1982	1983	Industrial Building	977,018
113	Cold Store in Damman for REDEC	REDEC	Dammam	1979	1980	Industrial Building	1,409,800
114	Abdul Razzak Abu Rashed	Mr. Abdul Razzak Abu Rashed	Yanbu	1977	1978	Industrial Building	3,564,400
115	Sheikh Ibrahim Elkhareiji Obhur	Sheikh Ibrahim Elkhareiji	Jeddah	1977	1977	Industrial Building	307,010
116	Alesayi Tower	Alssaudia Real Estate Development Co.	Jeddah	2010	2014	Mixed Use	16,550,900
117	Al Jawhara Tower	Damac Real Estate	Jeddah	2010	2013	Mixed Use	32,101,800
118	US Embassy	American Consulate Dhahran	Dhahran	2007	2007	Public Building	49,668
119	Rafic Hariri Technical Training Center Institute	Saudi Oger Limited	Riyadh	2006	2007	Public Building	1,676,842
120	Al Madinah Munawara Research & Study Center	Al Madinah Munawara	Al Madinah	2005	2006	Public Building	4,661,108
121	Shk. Abdur Rehman Al Jeraisy Family Complex	M/S Jeraisy Group	Riyadh	2003	2005	Public Building	1,516,200
122	Perimeter Security Wall and Pedestrian Access Control	American Consulate General	Dhahran	2002	2004	Public Building	2,465,322

## DSE Completed Projects List - Civil

S.No	Project Name	Client	Location	Start Date	Completion Date	Vertical	Project Values (USD)
123	ADA Community Center & Cultural Palace	Arriyadh Development Authority	Riyadh	2002	2003	Public Building	2,067,837
124	Zahid La-Promenade Zahid Real Estate Co., Ltd.	Zahdi Real Estate Co., Ltd.	Al-Khobar	1999	2001	Public Building	2,209,162
125	COMPOUND ACCESS CONTROL	American Consulate Dhahran	Dhahran	1999	2001	Public Building	913,048
126	Sawary 2 - Specialized Training School	SOFINFRA	Jeddah	1999	2001	Public Building	11,562,222
127	Al Falah Mosque	Abdulaziz Al Tuwaijri	Riyadh	1999	2001	Public Building	3,317,408
128	Lebanese Embassy & Residential Building	"Lebanese Embassy	Riyadh	1999	2001	Public Building	3,684,100
129	Perimeter Street Lighting U.S. Consulate Dhahran	American Consulate	Dhahran	2000	2000	Public Building	106,666
130	Façade Exterior Hared Line U.S. Consulate Dhahran	American Consulate	Dhahran	1999	2000	Public Building	94,474
131	Imam Mohammad Bin Saud Mosque	Arriyadh Development Authority	Addariyah	1997	1998	Public Building	6,420,522
132	King Abdul Aziz Mosque - Al-Kharj	Arriyadh Development Authority	Al-Kharj	1997	1998	Public Building	8,053,804
133	Riyadh School-Extension	"Riyadh School Extension	Riyadh	1994	1995	Public Building	2,369,709
134	Asal Dental Clinic	Asal Dental Clinic	Riyadh	1991	1992	Public Building	1,250,200
135	Bin Suwailam Commercial Group Est.	Bin Suwailam Commercial Group Est.	Riyadh	1989	1990	Public Building	1,596,000
136	Saudi Arabian International - British Section	Saudi Arabian International	Riyadh	1989	1989	Public Building	990,052
137	Muwafak AlMaydani Mosque	Muwafak AlMaydani	Riyadh	1988	1989	Public Building	2,926,000
138	Sh. Ibrahim Juffali's Mosque	Sh. Ibrahim Juffali's	Jeddah	1986	1988	Public Building	4,455,500
139	Embassy of Spain	Spain Embassy	Riyadh	1985	1986	Public Building	3,724,000
140	100 Bed Hospital in Aflaj for Copalex	Laila Al-Aflaj	Laila Al-Aflaj	1982	1984	Public Building	7,980,000
141	National Guard/Corp of Engineers	National Guard/ Corp of Engineers	Khashm	1978	1979	Public Building	2,067,618
142	Ministry of Interior	Ministry of Interior	Riyadh	1977	1978	Public Building	667,128

## DSE Completed Projects List - Civil

S.No	Project Name	Client	Location	Start Date	Completion Date	Vertical	Project Values (USD)
142	Austrian Embassy & Ambassadors Residence	Austrian Embassy Riyadh	Riyadh	1997	1998	Public Building/ Residential Building	2,817,292
143	Embassy of State of Qatar	Embassy of The State of Qatar	Riyadh	1995	1997	Public Building/ Residential Building	5,852,000
144	Development Of Atturaif Quarter 1+2	Arriyadh Development Authority	Riyadh	2011	2014	Residential	41,000,000
145	Sh. Mohammad Bin Mehfoz Villa	Sh. Mohammad Bin Mehfoz	Jeddah	2007	2012	Residential	19,000,000
146	Al-Turaif Development #1	Arriyadh Development Authority	Riyadh	2010	2012	Residential	45,464,320
147	Abdulrahman Bin Ali Residence	Abdulrahman Bin Ali	Riyadh	2009	2012	Residential	1,600,000
148	Building for Abu Diab	Mr. Abu Daib	Jeddah	1988	1991	Residential Building	4,588,500
149	Building for Sh. Abdul Rahman Bajsair	Sh. Abdul Rahman Bajsair	Riyadh	1990	1991	Residential Building	1,250,200
150	King Abdul Aziz University	King Abdul Aziz University,	Jeddah	2008	2011	Residential Compound	3,737,914
151	Street of Dreams (7 Villas) King Abdullah Economic City Rabigh- External Works	Emaar	Rabigh Jeddah	2008	2009	Residential Compound	6,517,000
152	Street of Dreams (7 Villas) King Abdullah Economic City Rabigh	Emaar	Rabigh Jeddah	2007	2009	Residential Compound	8,807,859
153	Dr. Fahd A. Al Sammari	Dr. Fahd A. Al Sammari	Riyadh	2006	2009	Residential Compound	3,112,200
154	Falcom Finance Institute Building	Saudi FAL Company Limited,	Riyadh	2006	2009	Residential Compound	14,139,621
155	Jeddah Gate Development Project Lot-E4 Substructure Works	Emaar	Jeddah	2007	2008	Residential Compound	6,265,456
156	King Abdullah Economic City Main Entry Gate	Emaar	Rabigh Jeddah	2007	2008	Residential Compound	4,703,601
157	Private Villa for HRH Prince Saud Bin Salman Bin Abdul Aziz	HRH. Prince Saud in Salman Jeddah	Jeddah	2005	2007	Residential Compound	4,615,100
158	Al Amoudiah Housing Compound	Amoudi Group	Jeddah	2002	2007	Residential Compound	23,669,324
159	Islamic Youth Center	World Assembly of Muslim Youth	Makkah	2006	2007	Residential Compound	5,719,000

## DSE Completed Projects List - Civil

S.No	Project Name	Client	Location	Start Date	Completion Date	Vertical	Project Values (USD)
160	Shk. Abdur Rehman AlJeraisy Family Complex in Riyadh	M/S Jeraisy Group	Riyadh	2003	2007	Residential Compound	10,987,917
161	Samanoudi Resedential Compound Jeddah	Hayat Abdul Latif Jameel Co. Ltd.	Jeddah	2005	2006	Residential Compound	21,945,000
162	Ansari Compound Al-Khobar 53 Units Villas & 16 Apartments	Mr. Abdulrazak M. Al Ansari	Al Khobar	2003	2005	Residential Compound	4,062,347
163	Jeddah Beach House	HRH Pr. Moh'd Bin Fahd A. Aziz	Jeddah	2002	2005	Residential Compound	19,622,985
164	Qassim Cement Company Production Line 3	HATAKAMA IHI - JV Partner- Marubeni Saudi Arabia Co., Ltd.	Qassim	2004	2005	Residential Compound	4,329,287
165	Al Gosaibi Housing Compound	K.A. ALGOSAIBI CONTRACTING	Al Khobar	2002	2003	Residential Compound	4,618,213
166	Yanbu Cement Company Yambu Civil Structures for HFO Supply system	Yanbu Cement Company	Yanbu	2001	2002	Residential Compound	385,700
167	Yanbu Co., New Boys School, Water Tanks, Fence & Football Field.	Yanbu Cement Company	Yanbu	2001	2002	Residential Compound	3,271,800
168	Yanbu Cement Company Renovation: - Old Boys and Girls School	Yanbu Cement Company	Yanbu	2000	2001	Residential Compound	4,522,000
169	New Residential Settlement for Yanbu Cement Company	Yanbu Cement Company	Yanbu	1996	1999	Residential Compound	34,048,000
170	Tamlik villas	Tamlik Ltd.	Jeddah	1994	1995	Residential Compound	7,075,600
171	Eight Villa Compound for Mr. Fawaz Al-Gosaibi	Mr. Fawaz Al Gosaibi	Riyadh	1992	1994	Residential Compound	3,321,083
172	Three Villas Compound for Mrs. Hoda Abbas Helmi	Mrs. Hoda Abbas Helmi	Jeddah	1991	1993	Residential Compound	2,472,182
173	Commonwealth of Australia Staff Housing	Commonwealth of Australia	Riyadh	1989	1990	Residential Compound	385,700
174	Compound of Sh. Abdul Maksoud Khojah	Sh. Abdul Maksoud Khojah	Jeddah	1986	1986	Residential Compound	611,800
175	Compound in Dariiyah, Riyadh for Arabian Chevron Inc	Arabian Chevron Inc	Riyadh	1980	1982	Residential Compound	3,990,000
176	Mr. Abdullah Elkhareiji Residential Compound	Mr. Abdullah Elkhareiji	Jeddah	1980	1981	Residential Compound	2,660,000



## DSE Completed Projects List - Civil

S.No	Project Name	Client	Location	Start Date	Completion Date	Vertical	Project Values (USD)
177	Abdul Razzak Abu Rashed House & Building works	Abdul Razzak Abu Rashed	Yanbu	1977	1977	Residential Compound	164,920
178	Novotel (Buildex) Hotel,	Assaudia Real Estate Development Co	Al Khobar	2008	2011	Residential Hotel	4,788,000
179	Sheraton Hotel Project	Dammam Hotel Company	Dammam	2007	2009	Residential Hotel	2,389,299
180	Bin Jumah Movenpick Hotel Al Khobar	Mansour B. Jumah Trad. & Cont. Est.	Al Khobar	2005	2008	Residential Hotel	50,264,805
181	Pension Fund Building (Riyadh)	Saudi Oger Limited	Riyadh	2005	2006	Residential Hotel	7,677,194
182	Makkah Residential Hotel (Shubaika 2)	Dallah Real Estate & Tourism Co.	Makkah	1994	1996	Residential Hotel	5,153,245
183	Al Baraka Residential Building - Shubaika 1	Dallah Real Estate & Tourism Co.	Makkah	1994	1995	Residential Hotel	4,655,000
184	Madinah Oberoi Hotel Extension Bid Package No. 1	Al Shayeh Co. Mr. Zaheer Khan	Madinah	1993	1994	Residential Hotel	665,000
185	Mr. Youssef Elkhareiji Yanbu Hotel	Youssef ElKheriji	Yanbu	1978	1979	Residential Hotel	5,320,000
186	Mr. Youssef Elkhareiji Yanbu Hotel	Mr. Youssef El Khareiji	Yanbu	1978	1979	Residential Hotel	3,192,000
187	Al Zahem Hotel (Plot. # 2066)	Al Zahem Co. Madinah Munawarah Dr. Mohamed Al Zahem	Madinah	2003	2005	Residential Mixed	3,724,000
188	Arriyadh Development Authority Community Center & Cultural Palace	Arriyadh Development Authority	Riyadh	2004	2005	Residential Mixed	1,091,651
189	Yanbu Cement Co. External Utilities	Mr. Essam Mulla Yanbu Cement Company	Yanbu	2003	2005	Residential Mixed	2,660,000
190	Arriyadh Development Authority Community Center & Cultural Palace.	Arriyadh Development Authority	Riyadh	2002	2003	Residential Mixed	2,273,244
191	Commercial & Residential Building	Dallah Real Estate & Tourism Co.	Madinah	1994	1996	Residential Mixed	26,561,311
192	Dr. Khalil Abdullah Al Ghalayini Building	Dr. Khalil Abdullah Al Ghalayini	Riyadh	1993	1995	Residential Mixed	2,312,935
193	HRH Prince Bader Bin Saud	HRH Prince Bader Bin Saud	Riyadh	2002	2006	Residential Palace / VIP	6,138,319
194	H.H. Prince Fahad Bin Khalid Palace	Murourid Construction Ltd.	Riyadh	2004	2005	Residential Palace / VIP	4,744,023

## DSE Completed Projects List - Civil

S.No	Project Name	Client	Location	Start Date	Completion Date	Vertical	Project Values (USD)
195	HRH Prince Bandar Bin Mohd. Residential Complex	HRH Prince Bandar Bin Mohd.	Riyadh	2001	2004	Residential Palace / VIP	8,434,231
196	Khalid N. Al Amer Al Rumaih Private Villa	Khalid N. Al Amer Al Rumaih	Riyadh	2002	2003	Residential Palace / VIP	2,027,486
197	HRH Prince Faisal Bin Fahad Bin Abdul Aziz Palace - Extension	HRH Prince Faisal Bin Fahad	Jeddah	2002	2002	Residential Palace / VIP	931,000
198	Residential Complex for HRH Prince Abdulrahman Al Fahad Al Faizal	HRH Prince Abdulrahman Al Fahad Al Faizal	Riyadh	1996	1999	Residential Palace / VIP	3,990,000
199	Villah for HRH Prince Khalid Bin Mousaed Bin Abdul Rahman Al Saud	HRH Prince Khalid Bin Mousaed Bin Abdul Rahman Al Saud	Riyadh	1994	1996	Residential Palace / VIP	2,379,935
200	Private Villa for HRH Prince Bandar Bin Khalid Al Faisal	HRH Prince Bandar Bin Khalid Al Faisal	Riyadh	1995	1996	Residential Palace / VIP	4,921,000
201	Palace for HRH Prince Mohammed Bin Naif Bin Abdul Aziz	HRH Prince Mohammed Bin Naif Bin Abdul Aziz	Jeddah	1994	1995	Residential Palace / VIP	6,650,000
202	Villa for Sh. Hussa Abu Nayyan & Sh. Hussam Eid Al-Salem	Sh. Hussa Abu Nayyan & Sh. Hussam Eid Al-Salem	Riyadh	1994	1995	Residential Palace / VIP	3,883,194
203	Villa for Dr. Ahmed Al-Malik	Dr. Ahmed Al-Malik	Riyadh	1991	1994	Residential Palace / VIP	9,842,000
204	Corniche Villa for Sh. Fahd Mohammad Alireza	Sh. Fahd Mohammad Alireza	Jeddah	1992	1993	Residential Palace / VIP	3,008,825
205	Palace for HRH Prince Mohammed Bin Naif Bin Abdul Aziz	HRH Prince Mohammed Bin Naif Bin Abdul Aziz	Jeddah	1990	1993	Residential Palace / VIP	13,300,000
206	Two Villas for Sh. Abdullah Bin Bakr Al Quthami	Sh. Abdullah Bin Bakr Al Quthami	Jeddah	1991	1993	Residential Palace / VIP	2,781,242
207	Hamad Al-Sheikh Villa	Hamad Al-Sheikh	Riyadh	1993	1993	Residential Palace / VIP	851,200
208	Wadhi Hanifah	Wadhi Hanifah	Riyadh	1992	1993	Residential Palace / VIP	1,250,200
209	Palace for Mr. Badr Ibrahim Bin Saedan	Mr. Badr Ibrahim Bin Saedan	Riyadh	1991	1993	Residential Palace / VIP	1,197,000
210	Villa for Mr. Abdul Majid Bin Malluh	Mr. Abdul Majid Bin Malluh	Riyadh	1991	1993	Residential Palace / VIP	798,000
211	Turki Bin Faisal Al Rashid Villa	Mr. Faisan Al Rashid	Riyadh	1990	1992	Residential Palace / VIP	3,591,000

## DSE Completed Projects List - Civil

S.No	Project Name	Client	Location	Start Date	Completion Date	Vertical	Project Values (USD)
217	Wadi Hanifah Farm Property	Wadi Hanifah Farm Property	Riyadh	1991	1992	Residential Palace / VIP	1,862,000
218	Villa for Sh. Omer Bin Saud El Beleihed	Sh. Omer Bin Saud El Beleihed	Riyadh	1990	1992	Residential Palace / VIP	1,250,200
219	Villa for Sh. Ahmed Hassan Fitaihi	Sh. Ahmed Hassan Fitaihi	Jeddah	1990	1991	Residential Palace / VIP	1,665,786
220	Villa for Mr. Abdullah Al-Banyan	Mr. Abdullah Al-Banyan	Riyadh	1989	1991	Residential Palace / VIP	1,219,610
221	Villa for Mr. Moustafa Bin Halim	Mr. Moustafa Bin Halim	Riyadh	1989	1991	Residential Palace / VIP	1,064,000
222	Villa for Dr. Abdullah Al-Omran	Dr. Abdullah Al-Omran	Riyadh	1989	1991	Residential Palace / VIP	1,729,000
223	Palace for HRH Prince Saud Abdullah Al-Faisal	HRH Prince Saud Abdullah Al-Faisal	Riyadh	1989	1991	Residential Palace / VIP	2,965,900
224	Villa for HRH Prince Salman Bin Khalid	HRH Prince Salman Bin Khalid	Riyadh	1990	1991	Residential Palace / VIP	442,415
225	Sh. Hatem Juffali's City House	Sh. Hatem Juffali's	Jeddah	1988	1990	Residential Palace / VIP	1,894,160
226	Villa for Sh. Abdullah Balkheir	Sh. Abdullah Balkheir	Jeddah	1988	1990	Residential Palace / VIP	1,702,400
227	Villa for Prince Sultan Bin Abdul Aziz Al Sudairy	Prince Sultan Bin Abdul Aziz Al Sudairy	Riyadh	1988	1990	Residential Palace / VIP	1,197,000
228	Villa for Dr. Abdullah Al Wohaiby	Dr. Abdullah Al Wohaiby	Riyadh	1988	1990	Residential Palace / VIP	1,516,200
229	Villa for Sh. Abdul Hoshen Al-Saleh	Sh. Abdul Hoshen Al-Saleh	Riyadh	1988	1990	Residential Palace / VIP	2,340,800
230	Palace of HRH Prince Saud Bin Khaled	HRH Prince Saud Bin Khaled	Riyadh	1987	1990	Residential Palace / VIP	4,522,000
231	Villa for HRH Prince Mohammad Al Faisal.	HRH Prince Mohammad Al Faisal.	Jeddah	1985	1988	Residential Palace / VIP	2,660,000
232	Palace of HRH Prince Ahmed Bin Salman	HRH Prince Ahmed Bin Salman	Riyadh	1988	1988	Residential Palace / VIP	234,976
233	Villa for HRH Prince Faisal Bin Fahd Bin Abdul Aziz	HRH Prince Faisal Bin Fahd Bin Abdul Aziz	Jeddah	1985	1987	Residential Palace / VIP	2,473,800
234	Villa & Annexes for Mr. Adel Khashoggi	Mr. Adel Khashoggi	Jeddah	1984	1985	Residential Palace / VIP	2,926,000
235	Prince Ahmad Bin Salman Bin Abdul Aziz Palace	Prince Ahmad Bin Salman Bin Abdul Aziz	Riyadh	1984	1984	Residential Palace / VIP	731,500
236	Villa & annexes for Mr. Adel Khashoggi	Mr. Adel Khashoggi	Riyadh	1983	1984	Residential Palace / VIP	2,872,800
237	Palace for HRH Prince Badr Bin Abdullah.	HRH Prince Badr Bin Abdullah.	Riyadh	1982	1984	Residential Palace / VIP	3,857,000
238	Villa & annexes for HRH Prince Majed Bin Abdul Aziz	HRH Prince Majed Bin Abdul Aziz	Makkah	1981	1982	Residential Palace / VIP	2,926,000

## DSE Completed Projects List - Civil

S.No	Project Name	Client	Location	Start Date	Completion Date	Vertical	Project Values (USD)
239	Sheikh A. Abalkhail Residence Villa	Sheikh A. Abalkhail	Riyadh	2006	2008	Residential Private	6,650,000
240	Mr. Johara & Huda Al Jeraisy Villas -Riyadh	M/S Jeraisy Group	Riyadh	2003	2008	Residential Private	420,280
241	Sheikh Abdullah Al Hobaib Residence Villa	Arabian Con. Eng.	Riyadh	2004	2005	Residential Private	2,686,600
242	Sadad Al Hussein Private Villa	Sadad Al Hussein	Doha/ Khobar	2003	2004	Residential Private	627,497
243	HRH Prince Nawaf Bin Faisal Bin Fahd Residential Complex	HRH Prince Nawaf Bin Faisal Bin Fahd	Riyadh	2003	2004	Residential Private	2,167,900
244	Abdullah Hashim Group - Jeddah	Hashim Group Co.	Jeddah	2001	2002	Residential Private	931,000
245	HRH Prince Moh'd Bin Naif Palace, Obhur Staff Building	HRH Prince Moh'd Bin Naif	Jeddah	2001	2002	Residential Private	505,400
246	Construction of Private Villa	Dr. Mohammed I. Jarallah Al Memariah / Arch. Design House Co.	Riyadh	2001	2002	Residential Private	1,596,000
247	Babtain Villa Sh. Abdul Wahab S. Al-Babtain	Mr. Fathe Mahamoud Helmi Sheikh Abdul Wahab S. Al-Babtain	Al-Khobar	2000	2001	Residential Private	3,319,077
248	Private Villas for Sh. Abdullah Twajri & Sh. Ahmed Twajri	Sh. Abdullah Twajri & Ahmed Twajri Sh. Ahmed Twajri	Riyadh	1999	2001	Residential Private	3,724,000
249	Sheikh Ibrahim Al-Angary Villas	Sheikh Ibrahim Al-Angary	Jeddah	1999	2000	Residential Private	6,188,756
250	Al-Sayyed Villas	Al-Sayyed Sons Company	Riyadh	1994	1998	Residential Private	7,980,000
251	New Staff Buildings for Palace in Obhur	H.R.H Prince Mohammed Bin Naif	Jeddah	1996	1996	Residential Private	1,502,900
252	Winter House for HRH Prince Sultan	H.R.H. Prince Sultan	Riyadh	1996	1996	Residential Private	2,167,900
253	Sh. Abdul Rahman Bin Khozaim Building & Villa	Sh. Abdul Rahman Bin Khozaim	Riyadh	1993	1995	Residential Private	2,154,600
254	Villa in Chevron Compound	Villa in Chevron Compound	Riyadh	1995	1995	Residential Private	625,100
255	Villa for Sh. Amin Juffali	Sh. Amin Juffali	Jeddah	1990	1991	Residential Private	481,460
256	Villa for Mr. Ali Shihabi	Mr. Ali Shihabi	Riyadh	1989	1990	Residential Private	585,200
257	Villa for HRH Princes Sultana Bint Abdul Aziz	HRH Princes Sultana Bint Abdul Aziz	Jeddah	1987	1988	Residential Private	505,400



## DSE Completed Projects List - Civil

S.No	Project Name	Client	Location	Start Date	Completion Date	Vertical	Project Values (USD)
258	Villa for Mr. Khaled Abdullah Batawil	Mr. Khaled Abdullah Batawil	Jeddah	1986	1987	Residential Private	864,500
259	Villa for HRH Sultana Bint Abdul Aziz	HRH Sultana Bint Abdul Aziz	Jeddah	1985	1986	Residential Private	349,790
260	Villa for Mr. Mahamoud Abdul Hadi	Mr. Mahamoud Abdul Hadi	Riyadh	1986	1986	Residential Private	308,411
261	Two villas for Mr. Suleiman Elkhareiji	Mr. Suleiman Elkhareiji	Riyadh	1983	1984	Residential Private	798,000
262	Wadi Hanifah	Wadi Hanifah	Riyadh	1993	1993	Road Works	558,600
263	ThePointe	Nakheel	UAE, Dubai	2014	2019	Commercial	100,617,771
264	Saraya Aqaba	Saraya Aqaba Real Estate Development Company	Jordan, Amman	2013	Ongoing	Commercial	217,291,797
265	Antara Salboukh Compound	Salboukh Company	KSA, Riyadh	2014	2016	Residential	130,000,000
266	KAPSARC	Saudi Aramco	KSA, Riyadh	2011	2016	Educational	958,837,635
267	Maliha Hospital	UAE Armed Forces	UAE, Sharjah	2013	2017	Hospital	64,431,847
268	Emiral - Zone 1-4	Emiral	Algeria	2012	Ongoing	Mixed Use	139,947,708
269	AlReef Residence	Sama AlKhaleej	UAE, Dubai	2014	2019	Residential	47,646,662



# Projects

## Drake & Scull Oil & Gas (DSO&G)

Drake & Scull Oil and Gas asks the right questions to ensure the company understands clients’ needs, and then delivers the best solutions, based on its in-depth knowledge and expertise in engineering. For this reason, many of the company’s clients are major oil companies and refineries, which demand excellence, and are confident that it has the necessary capabilities to meet these challenges.

### Projects

Drake & Scull’s rich project history is a testament to the firm’s reliability in successfully delivering large-scale projects, from single-discipline construction through to turnkey solutions.

The company’s services cover the complete spectrum of oil and gas industry contracting needs, including engineering, EPC, EPCM, and construction.

Its oil and gas project portfolio spans civil, mechanical, pipeline, piping, equipment, E&I works, and turnkey projects.

### DSO&G Completed Projects List

S.No	Project Name	Client	Location	Start Date	Completion Date	Scope of Work	Project Values (USD)
1	EPC of Oil and Water Transfer and Trunk lines- Zubair Field Development	ENI Iraq BV	Iraq, Zubair	2012	2015	Engineering, procurement and Construction of a total 130 km oil and water transfer pipelines ranging from 16" - 52". Including all associated civil, structural, electrical and instrumentation works.	132,000,000
2	EPC of Oil and Water Flowlines - Zubair Field Development	ENI Iraq BV	Iraq, Zubair	2012	2015	Engineering, procurement and construction of total 190 km oil and water flowlines ranging from 6"-10" including all associated civil, structural, electrical and instrumentation works.	152,000,000
3	EPC of Wellhead Hookups and Manifold Works- Zubair Field Development	ENI Iraq BV	Iraq, Zubair	2012	2015	Engineering, procurement and construction of 64 numbers of wellhead hook-ups and 64 numbers of manifold connections, including all associated civil, structural, mechanical, electrical and instrumentation works. The scope also included supply and installation of 60 packaged substations.	80,000,000

# DSO&G Completed Projects List

S.No	Project Name	Client	Location	Start Date	Completion Date	Scope of Work	Project Values (USD)
4	Low Density Ammonium Nitrate Plant	Egypt Hydrocarbon Corporation	Egypt	2011	2014	Main Construction Contract for complete process plant facilities including all civil, structural & steel, 5 nos. Storage Tanks, Piping & Equipment Works.	51,110.000
5	Zubair Oil Field 2	ENI Iraq	Iraq	2016	2023	Petrochemical	61,865,874



## Passavant Energy & Environment Ongoing Projects

S.No.	Project Name	Client	Location	Start Date	Vertical	Project Values (USD)
1	WWTP Sud Meliane II	ONAS	Tunisia	2020	Waste Water Treatment	40,340,392
2	STP Chandigarh Smart City	Chandigarh Smart City Limited	India	2020	Waste Water Treatment	9,976,137
3	MLD STP Aurangabad Project	Aurangabad Industrial Township Limited	India	2018	Waste Water Treatment	7,444,077
4	Wastewater Treatment Plants New Delhi and Bangalore	Water Supply and Sewage Board	India	2016	Waste Water Treatment	47,650,000
5	Malur Wastewater Treatment Plant	Karnataka Urban Water Supply and Drainage Board	India, Karnataka	2015	Waste Water Treatment	1,195,904
6	NATHDWARA SEWER NETWORK	Office of the commissioner Municipal Board Nathdwara	India	2014	Waste Water Treatment	5,354,369
7	WWTP Ramtha	Water authority of Jordan	Jordan	2023	Waste Water Treatment	22.517.856
8	STP AL KHOBAR	Al Yamama	KSA	2024	Waste Water Treatment	46.343.281
9	WTP Timisoara	Aquatim	Romania	2022	Drinking Water Treatment	15.176.310
10	STP ,Tukucha Khola	Ministry of Urban Development , Nepal	Nepal	2022	Waste Water Treatment	8.150.279



# Passavant Energy & Environment Completed Projects

S.No.	Project Name	Client	Location	Start Date	Completion Date	Vertical	Project Values(USD)
1	Wadi Shallala O&M	Water Authority of Jordan	Jordan	2015	2016	Waste Water Treatment	1,314,805
2	WWTP Bursa	Municipality of Bursa	Turkey	2016	2020	Waste Water Treatment	16,187,748
3	Prizren Network	Prizren Network	Kosovo	2015	2018	Waste Water Treatment	2,282,086
4	WWTP Wadi Extra Works Filtration	Ministry of Water and Irrigation, Water Authority of Jordan	Jordan	2015	2016	Waste Water Treatment	2,408,190
5	Gabal El Asfar Design Services	Ministry of Housing Utilities and Urban Development	Egypt	2015	2020	Waste Water Treatment	961,072
6	Saraya Bandar Jissah	Saraya Bandar Municipality	Oman	2015	2015	Waste Water Treatment	2,500,000
7	Seawater Megapure Pilot System	Koch Membrane System	Germany	2015	2012	Waste Water Treatment	138,772
8	RO Plant Lamar Towers	Lamar Development Company	KSA	2015	2016	Waste Water Treatment	2,253,246
9	RO Lusall	Municipality of Lusall	Romania	2015	2018	Waste Water Treatment	1,153,770
10	Nablus Operation Assistance	Municipality of Nablus	Palestine	2015	2015	Waste Water Treatment	1,181,000
11	Saraya Bandar Jissah O&M	Saraya Bandar Municipality	Oman	2015	2017	Waste Water Treatment	2,551,307

## Passavant Energy & Environment Completed Projects

S.No.	Project Name	Client	Location	Start Date	Completion Date	Vertical	Project Values (USD)
12	Ford Plant O&M	Ford India Pvt Ltd Inr.	India	2015	2016	Waste Water Treatment	641,290
13	Servicearbeiten PR	Government	Germany	2015	2016	Waste Water Treatment	418,000
14	RO Jebel Omar	Jebel Omar Company	KSA	2014	2015	Waste Water Treatment	868,721
15	WWTP SARAJEVO at BULTILA	KJKP "Vodovod i kanalizacija" d.o.o. Sarajevo	Bosnia/ Herzegovina	2014	2016	Waste Water Treatment	13,021,662
16	Rehabilitation and extension of WWTP in Sinaia and Breaza	Municipalities of Sinaia and Breaza	Romania	2014	2016	Waste Water Treatment	14,834,342
17	BWPCHANGSHA	China Silk	China	2014	2017	Waste Water Treatment	4,651,745
18	WWTP KERBALA ELECTRICAL	AL-Hanan Company Ltd and AL- EZAA Company Ltd	Iraq	2014	2017	Waste Water Treatment	7,655,385
19	Allahabad Sewerage Plant	Municipality of Allahabad	India	2015	2019	Waste Water Treatment	16,000,000
20	WWTP Galati Stage 2	Ministry of Housing Utilities and Urban Development	Egypt	2014	2016	Waste Water Treatment	8,384,168
21	WWTP Gabal El-Asfar	Ministry of Housing Utilities and Urban Devt.	Egypt	2013	2020	Waste Water Treatment	37,749,623
22	WWTP Campina	Development Apa Canal Sibiu	Romania	2013	2020	Waste Water Treatment	16,033,962
23	WWTP Adiyaman	Ministry of Enviroment and Urbanization	Turkey	2013	2015	Waste Water Treatment	8,210,695
24	WWTP Thu Duc III	SAIGON CLEAN WATER BUSINESS AND INVESTMENT	Vietnam	2012	2014	Waste Water Treatment	25,935,583
25	WWTP Roman	COMPANIA JUDETENA APA SERV SA	Romania	2012	2015	Waste Water Treatment	11,167,244
26	WWTP Sibiu	Apa Canal Sibiu	Romania	2012	2018	Waste Water Treatment	10,097,850
27	AlArar Water Treatment Plant	Krimmley Contracting Company	KSA	2011	2014	Waste Water Treatment	5,364,072
28	WWTP Poarta Alba	Sc Raja SA Constanta	Romania	2011	2014	Waste Water Treatment	4,372,287

## Passavant Energy & Environment Completed Projects

S.No.	Project Name	Client	Location	Start Date	Completion Date	Vertical	Project Values(USD)
29	WWTP Kerbala 1	Al-Hanan Company for General Contracts & Al-Ezaa Company for General Contracts	Iraq, Kerbala	2005	2008	Waste Water Treatment	18,780,477
30	Ford Bottling Plant	Drake & Scull Water & Energy	India	2014	2014	Water Treatment	453,961
31	IWTP Ford India	Drake & Scull Water & Energy	India	2013	2014	Water Treatment	6,053,913
32	Buriej Wastewater Treatment Plant (WWTP) and Wadi Gaza Collection and Pumping Station (CPS)	Coastal Municipalities Water Utility (CMWU) and KfW Germany	Palestine	2016	2019	Waste Water Treatment	20,420,000
33	Wastewater Treatment Plants New Delhi and	Water Supply and Sewage Board	India	2016	2019	Waste Water Treatment	47,650,000
34	STEP BOUIRA BETRIEB	Office National d'Assainissement	Algeria	2006	2008	Operation & Maintenance	2,170,000
35	WTP BOTOSANI	Ministry of Public Finance - CFCU	Romania	2007	2009	Potable Water	13,383,000
36	KZA Moorburg	Vattenfall	Germany	2009	2011	Process Water	4,520,000
37	IWT CERNAVODA	SNN (Societatea Nationala Nuclearelectrica) - CNE Cernavoda	Romania	2008	2012	Process Water	14,100,000
38	WWTP Jining IBN	China International Tendering Company	China	2006	2012	Sludge Treatment	178,000
39	WWTP Shanghai-Bailonggang	Shanghai Municipal Sewerage Company	China	2008	2012	Sludge Treatment	13,790,000
40	SWTP No. 9 Marafiq Jubail	Megafield International (Group) Co. Ltd.	KSA	2010	2012	Sludge Treatment	2,000,000
41	WWTP Yantai Taoziwan	Yantai Sewage Disposal Administration Division	China	2008	2015	Waste Water	9,481,000
42	WWTP Batman	BASKI (local water supply company)	Turkey	2008	2014	Waste Water	15,440,000

## Passavant Energy & Environment Completed Projects

S.No.	Project Name	Client	Location	Start Date	Completion Date	Vertical	Project Values(USD)
43	WWTP MBBR Kerbala	Nabee AlGhadeer Contracting Company	Iraq, Karbala	2012	2013	Waste Water	500,000
44	WWTP Wadi Shallala	Water Authority of Jordan	Jordan	2009	2013	Waste Water	33,068,600
45	WWTP Nablus	Municipality of Nablus	Palestine	2010	2013	Waste Water	11,680,000
46	STEP BOUIRA ANLAGE	Office National d'Assainissement	Algeria	2006	2012	Waste Water	26,700,000
47	WWT Turbo-LME Package Tianjin	Tianjin Veolia Water Bohua Yongli Company Ltd.	China	2010	2012	Waste Water	1,798,420
48	WWTP BUDAPEST BIOLOGIE	Alterra (Municipality of Budapest)	Hungary	2008	2012	Waste Water	12,512,000
49	WWTP YANBU	Aziz Company Ltd.	KSA	2001	2012	Waste Water	10,000,000
50	WWTP BRAILA	Compania de Utilitati Publice Unarea Area Braila	Romania	2008	2012	Waste Water	55,760,000
51	WWTP Witpan	Lektratek Water	South Africa	2010	2012	Waste Water	544,000
52	Nagpur Engineering Project	Municipality of Nagpur	India	2015	2016	Waste Water Treatment	1,000,000
53	WWTP Gujarat	Ford India Pvt Ltd Inr.	India, Gujarat	2014	2016	Waste Water Treatment	7,629,428
54	WWTP Reghin	SC Compania Aquaserv SA	Romania	2014	2016	Waste Water Treatment	5,770,000
55	Durr India DM Plant	Durr India	India	2015	2015	Waste Water Treatment	272,480
56	Kerbala Electrical	AlHannan Company Ltd. And AlEzaa Company Ltd	Iraq	2015	2015	Waste Water Treatment	7,629,428
57	Rehabilitation and Extension of WWTP Romania	Compania Jude Teana	Romania	2014	2015	Waste Water Treatment	17,030,000

## Passavant Energy & Environment Completed Projects

S.No.	Project Name	Client	Location	Start Date	Completion Date	Vertical	Project Values (USD)
58	WWTP Fraiha	Balad Al Khebra	Iraq	2014	2015	Waste Water Treatment	3,269,755
60	WWTP Plopeni	SC Hidro Prahova SA	Turkey	2014	2014	Waste Water Treatment	22,000,000
61	RO Khalifa City	Drake & Scull PJSC	UAE	2010	2012	Waste Water Treatment	1,034,587
62	WWTP Zadar Centre	Odvodnja d.o.o Zadar	Croatia	2006	2010	Waste Water Treatment	11,355,053
63	WWTP Constanta North	SC Raja SA Constanta	Romania	2002	2010	Waste Water Treatment	32,115,012
64	WWTP GJAKOVA	Regional Water Supply Company	Kosovo	2018	2020	Waste Water Treatment	8,506,092
65	WWTP South Dhahran	National Water Company (NWC)	Riad, KSA	2017	2019	Waste Water Treatment	23,960,064
66	WWTP Chisinau	Apa-Canal Chisinau	Moldova	2017	2020	Waste Water Treatment	13,646,834
67	WWTP JAKKUR	Bangalore Water Supply and Sewerage	India	2016	2023	Waste Water Treatment	7,311,952
68	Buriej Wastewater Treatment Plant (WWTP) and Wadi Gaza Collection and Pumping Station (CPS)	Coastal Municipalities Water Utility (CMWU) and KfW Germany	Palestine	2016	2021	Waste Water Treatment	20,662,482
69	WWTP Tayasir	Municipality of Tayasir	Palestine	2016	2018	Waste Water Treatment	6,691,967
70	Allahabad Sewerage network	Ganga Pollution Control Unit U.P. Jal Nigam, Allahabad	India	2015	2020	Waste Water Network	19,732,595
71	WWTP Amritsar North and South Zone	Punjab Government	India, Punjab	2014	2016	Waste Water Treatment	5,464,837
72	WWTP Coronation Pillar	Delhi Jal Board	India	2016	2019	Waste Water Treatment	30,320,833
73	WWTP Coronation Engineering	Delhi Jal Board	India	2016	2019	Waste Water Treatment	594,049
74	WWTP Coronation Digester Equipment	Delhi Jal Board	India	2020	2021	Waste Water Treatment	690,560





# ***Drake & Scull***

Drake & Scull International PJSC  
and Subsidiaries

# ISO CERTIFICATION

# CERTIFICATE

This is to certify that Management System of:

## Drake & Scull International (PJSC)

Has been assessed and found compliant with the requirements of below:

### ISO 9001:2015

**Certificate No:**

CR/SD-20530/01

**Scope of Registration:**

Construction and Installation, Operations, Maintenance of Mechanical, Electrical, Plumbing, Power, Telecommunication, Building, Water, Waste Water & Sludge Treatment Work and Infrastructure Works. Strategic Planning, Business Development, Tender and Bid Management, Project Management, Contracting, Engineering, Procurement, Construction, Installation, Testing and Commissioning.

**IAF Code(s):** 28

**NACE Code(s):** 41.2, 43.2, 43.3

**Registered Site(s):**

Drake & Scull International (PJSC)  
(Ground Floor(G17), Churchill Tower, Business Bay, Dubai, UAE)  
Drake & Scull International - LLC - Abu Dhabi.  
(P.O. Box: 44325, Office No. M04, Building No 1, Turouh Street No 5, Al Danah Area, Abu Dhabi, UAE)  
Drake and Scull Engineering LLC.  
(Ground Floor(G17), Churchill Tower, Business Bay, Dubai, UAE)

**Certificate Issued :** 02/03/2024

**Certificate Expiry :** 17/02/2025



To Verify scan QR code or visit  
**WWW.TUVSW.COM**



For the issuing office:  
**TUV SW**



**Authorized Signatory**

## TUVSW STANDARDIZATION CERTIFICATIONS L.L.C

P.O.Box # 232991, Office # 208, Dream Building 2, Al Qusais Ind. 4, Dubai, UAE

This certificate's validity is subject to the organization maintaining their system in accordance with TUV SW requirements for system certification. Validity can be confirmed by visiting the [www.swtuv.com](http://www.swtuv.com). This certificate will remain the property of TUV SW & must be returned upon request.

UID : 552421

Doc.No : CR/SD-20530/02

Initial Certification : 18/02/2020



# CERTIFICATE

This is to certify that Management System of:

**Drake & Scull International (PJSC)**

Has been assessed and found compliant with the requirements of below:

**ISO 14001:2015**

**Certificate No:**

CR/SD-20530/02

**Scope of Registration:**

Construction and Installation, Operations, Maintenance of Mechanical, Electrical, Plumbing, Power, Telecommunication, Building, Water, Waste Water & Sludge Treatment Work and Infrastructure Works. Strategic Planning, Business Development, Tender and Bid Management, Project Management, Contracting, Engineering, Procurement, Construction, Installation, Testing and Commissioning.

**IAF Code(s):** 28

**NACE Code(s):** 41.2, 43.2, 43.3

**Registered Site(s):**

Drake & Scull International (PJSC)

(Ground Floor(G17), Churchill Tower, Business Bay, Dubai, UAE)

Drake & Scull International - LLC - Abu Dhabi.

(P.O. Box: 44325, Office No. M04, Building No 1, Turouh Street No 5, Al Danah Area, Abu Dhabi, UAE)

Drake and Scull Engineering LLC.

(Ground Floor(G17), Churchill Tower, Business Bay, Dubai, UAE)

**Certificate Issued :** 02/03/2024

**Certificate Expiry :** 17/02/2025



To Verify scan QR code or visit  
**WWW.TUVSW.COM**



For the issuing office:  
**TUV SW**

**Authorized Signatory**

**TUVSW STANDARDIZATION CERTIFICATIONS L.L.C**

P.O.Box # 232991, Office # 208, Dream Building 2, Al Qusais Ind. 4, Dubai, UAE

This certificate's validity is subject to the organization maintaining their system in accordance with TUV SW requirements for system certification. Validity can be confirmed by visiting the [www.swtuv.com](http://www.swtuv.com). This certificate will remain the property of TUV SW & must be returned upon request.

CERTIFICADO - CERTIFICATE - CERTIFIKAT - CERTIFICAT - 证书 - شهادة - 증명서 - CERTIFICA

UID : 775712

Doc.No : CR/SD-20530/03

Initial Certification : 18/02/2020



# CERTIFICATE

This is to certify that Management System of:

**Drake & Scull International (PJSC)**

Has been assessed and found compliant with the requirements of below:

**ISO 45001:2018**

**Certificate No:**

CR/SD-20530/03

**Scope of Registration:**

Construction and Installation, Operations, Maintenance of Mechanical, Electrical, Plumbing, Power, Telecommunication, Building, Water, Waste Water & Sludge Treatment Work and Infrastructure Works. Strategic Planning, Business Development, Tender and Bid Management, Project Management, Contracting, Engineering, Procurement, Construction, Installation, Testing and Commissioning.

**IAF Code(s):** 28

**NACE Code(s):** 41.2, 43.2, 43.3

**Registered Site(s):**

Drake & Scull International (PJSC)

(Ground Floor(G17), Churchill Tower, Business Bay, Dubai, UAE)

Drake & Scull International - LLC - Abu Dhabi.

(P.O. Box: 44325, Office No. M04, Building No 1, Turouh Street No 5, Al

Danah Area, Abu Dhabi, UAE)

Drake and Scull Engineering LLC.

(Ground Floor(G17), Churchill Tower, Business Bay, Dubai, UAE)

**Certificate Issued :** 02/03/2024

**Certificate Expiry :** 17/02/2025



To Verify scan QR code or visit  
**WWW.TUVSW.COM**



For the issuing office:  
**TUV SW**

**Authorized Signatory**

**TUVSW STANDARDIZATION CERTIFICATIONS L.L.C**

P.O.Box # 232991, Office # 208, Dream Building 2, Al Qusais Ind. 4, Dubai, UAE

This certificate's validity is subject to the organization maintaining their system in accordance with TUV SW requirements for system certification. Validity can be confirmed by visiting the [www.swtuv.com](http://www.swtuv.com). This certificate will remain the property of TUV SW & must be returned upon request.



## PASSAVANT ENERGY & ENVIRONMENT GMBH

Hahnstrasse 31-35, 60528 Frankfurt am Main, Germany

*Certificate No:* QA/RO/9001/10016

The above mentioned organization has implemented and applies a quality management system within the scope specified below and its compliance with the relevant standard has been approved by ALBERK QA TECHNIC.

### ISO 9001:2015

**DESIGN, CONSTRUCTION, REHABILITATION, SUPPLY, INSTALLATION, COMMISSIONING, TECHNICAL ASSISTANCE, PROJECT MANAGEMENT, OPERATION AND MAINTENANCE OF DRINKING WATER AND WASTEWATER TREATMENT PLANTS, DRINKING WATER AND SEWERAGE NETWORKS, WATER PUMPING STATIONS, WASTE TREATMENT PLANTS, BIOGAS PLANTS, ELECTRICITY PRODUCTION PLANTS. CONSTRUCTION WORKS OF UTILITY PROJECTS FOR FLUIDS.**

*Non-applicable Clauses : -*

**EA CODE: 28, 29, 34**

This certificate is valid as long as the company fulfills the requirements of the ISO 9001:2015 standard and bears its responsibility towards ALBERK QA TECHNIC.

*Certificate Issue Date:* 12.05.2023

*Certificate Validity Date:* 12.05.2024

*Certificate First Issue Date:* 12.05.2023

*Certification cycle / End Date :* 3 years / 11.05.2026

*Certificate Revision Number and Date :* 00 / 12.05.2023

**General Manager**  
**Latif Murat YILMAZ**

**ALBERK QA TECHNIC INTERNATIONAL TECHNICAL  
CONTROL AND CERTIFICATION CORP.**

Barbaros Mah. Al Zambak S. Varyap Meridian A Blok K:19 NO:2

ATAŞEHİR İSTANBUL

Tel : 0216 572 49 10-11-12

Fax : 0216 572 49 14

[www.qatechnic.com](http://www.qatechnic.com)



MSCB-208







## PASSAVANT ENERGY & ENVIRONMENT GMBH

Hahnstrasse 31-35, 60528 Frankfurt am Main, Germany

*Certificate No:* QA/RO/14001/10011

The above mentioned organization has implemented and applies a environmental management system within the scope specified below and its compliance with the relevant standard has been approved by ALBERK QA TECHNIC.

### ISO 14001:2015

**DESIGN, CONSTRUCTION, REHABILITATION, SUPPLY, INSTALLATION, COMMISSIONING, TECHNICAL ASSISTANCE, PROJECT MANAGEMENT, OPERATION AND MAINTENANCE OF DRINKING WATER AND WASTEWATER TREATMENT PLANTS, DRINKING WATER AND SEWERAGE NETWORKS, WATER PUMPING STATIONS, WASTE TREATMENT PLANTS, BIOGAS PLANTS, ELECTRICITY PRODUCTION PLANTS. CONSTRUCTION WORKS OF UTILITY PROJECTS FOR FLUIDS.**

**EA CODE : 28, 29, 34**

This certificate is valid as long as the company fulfills the requirements of the ISO 14001:2015 standard and bears its responsibility towards ALBERK QA TECHNIC.

*Certificate Issue Date:* 12.05.2023

*Certificate Validity Date:* 12.05.2024

*Certificate First Issue Date:* 12.05.2023

*Certification cycle / End Date : 3 years / 11.05.2026*

*Certificate Revision Number and Date : 00 / 12.05.2023*

**General Manager**  
**Latif Murat YILMAZ**

**ALBERK QA TECHNIC INTERNATIONAL TECHNICAL  
CONTROL AND CERTIFICATION CORP.**

Barbaros Mah. Al Zambak S. Varyap Meridian A Blok K:19 NO:2  
ATAŞEHİR İSTANBUL

Tel : 0216 572 49 10-11-12

Fax : 0216 572 49 14

[www.qatechnic.com](http://www.qatechnic.com)



MSCB-208





**ALBERK QA TECHNIC INTERNATIONAL**  
**TECHNICAL CONTROL AND CERTIFICATION CORP.**  
 Barbaros Mah. Al Zambak S. Varyap Meridian A Blok  
 K:19 NO:2 ATAŞEHİR İSTANBUL  
 Tel : 0216 572 49 10-11-12 Fax : 0216 572 49 14  
[www.gatechnic.com](http://www.gatechnic.com)

Certificate CH15/0584

The management system of

# Drake & Scull for Contracting Oil and Gas Fields Facilities L.L.C

P.O. Box: 44325, Office No- M04, Building No 1, Al Danah Area, Turouh Street No 5, Abu Dhabi, United Arab Emirates.

has been assessed and certified as meeting the requirements of  
**ISO 9001:2015**

For the following activities

Project Management, Engineering, Procurement, Construction, Installation & Commissioning of Water, Energy, Industrial, Oil & Gas and Related Industries process Plants & Pipeline Systems.

This certificate is valid from 01 May 2024 until 30 April 2027 and remains valid subject to satisfactory surveillance audits.

Issue 4. Certified since 01 May 2015



Authorised by  
Daniel Willemin

Authorised by  
Jan Meemken

SGS Société Générale de Surveillance SA  
Technoparkstrasse 1, 8005, Zurich, Switzerland  
t +41 (0)44 445-16-80 - [www.sgs.com](http://www.sgs.com)



This document is an authentic electronic certificate for Client' business purposes use only. Printed version of the electronic certificate are permitted and will be considered as a copy. This document is issued by the Company subject to SGS General Conditions of certification services available on [Terms and Conditions](#) | SGS. Attention is drawn to the limitation of liability, indemnification and jurisdictional clauses contained therein. This document is copyright protected and any unauthorized alteration, forgery or falsification of the content or appearance of this document is unlawful.





Certificate CH15/0585

The management system of

# Drake & Scull for Contracting Oil and Gas Fields Facilities L.L.C

P.O. Box: 44325, Office No- M04, Building No 1, Al Danah Area, Turouh Street No 5, Abu Dhabi, United Arab Emirates.

has been assessed and certified as meeting the requirements of  
**ISO 14001:2015**

For the following activities

Project Management, Engineering, Procurement, Construction, Installation & Commissioning of Water, Energy, Industrial, Oil & Gas and Related Industries process Plants & Pipeline Systems.

This certificate is valid from 01 May 2024 until 30 April 2027 and remains valid subject to satisfactory surveillance audits.

Issue 4. Certified since 01 May 2015



Authorised by  
Daniel Willemin

Authorised by  
Jan Meemken

SGS Société Générale de Surveillance SA  
Technoparkstrasse 1, 8005, Zurich, Switzerland  
t +41 (0)44 445-16-80 - [www.sgs.com](http://www.sgs.com)



This document is an authentic electronic certificate for Client' business purposes use only. Printed version of the electronic certificate are permitted and will be considered as a copy. This document is issued by the Company subject to SGS General Conditions of certification services available on [Terms and Conditions](#) | SGS. Attention is drawn to the limitation of liability, indemnification and jurisdictional clauses contained therein. This document is copyright protected and any unauthorized alteration, forgery or falsification of the content or appearance of this document is unlawful.



Certificate CH21/0691

The management system of

## Drake & Scull for Contracting Oil and Gas Fields Facilities L.L.C

P.O. Box: 44325, Office No- M04, Building No 1, Al Danah Area, Turouh Street No 5, Abu Dhabi, United Arab Emirates.

has been assessed and certified as meeting the requirements of  
**ISO 45001:2018**

For the following activities

Project Management, Engineering, Procurement, Construction, Installation & Commissioning of Water, Energy, Industrial, Oil & Gas and Related Industries process Plants & Pipeline Systems.

This certificate is valid from 01 May 2024 until 30 April 2027 and remains valid subject to satisfactory surveillance audits.

Issue 2. Certified since 09 July 2021

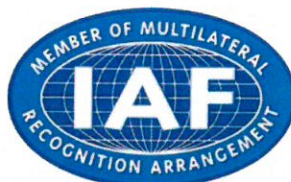
This organization was previously certified to OHSAS 18001 since 01 May 2015

*D. Willemijn Jan Meemken*

Authorised by  
Daniel Willemijn

Authorised by  
Jan Meemken

SGS Société Générale de Surveillance SA  
Technoparkstrasse 1, 8005, Zurich, Switzerland  
t +41 (0)44 445-16-80 - [www.sgs.com](http://www.sgs.com)



This document is an authentic electronic certificate for Client' business purposes use only. Printed version of the electronic certificate are permitted and will be considered as a copy. This document is issued by the Company subject to SGS General Conditions of certification services available on [Terms and Conditions](#) | SGS. Attention is drawn to the limitation of liability, indemnification and jurisdictional clauses contained therein. This document is copyright protected and any unauthorized alteration, forgery or falsification of the content or appearance of this document is unlawful.







## Drake & Scull International PJSC Profile - 2025

DSI PJSC UAE **+971 45283444**

Passavant Germany **+4916 2257 4676**

For further enquiries:

DSI PJSC	: dsi.pjsc@drakescull.com
DSI Engg	: dsi.engg@drakescull.com
DS Oil& Gas	: Oilgas@drakescull.com
Passavant	: info@passavant-ee.com

Or please visit **[www.drakescull.com](http://www.drakescull.com)**